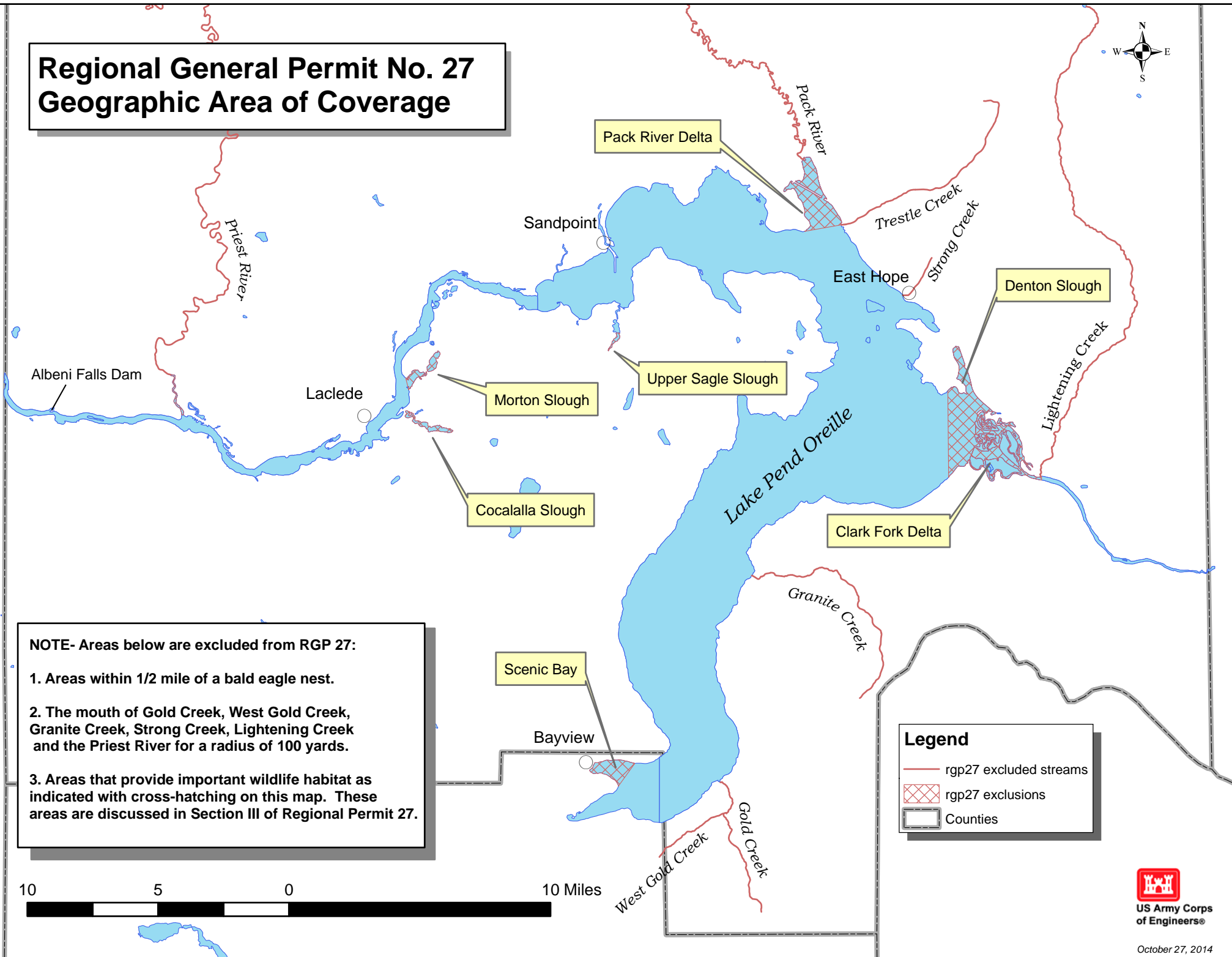
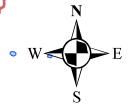





# Regional General Permit No. 27 Geographic Area of Coverage



**NOTE- Areas below are excluded from RGP 27:**

1. Areas within 1/2 mile of a bald eagle nest.
2. The mouth of Gold Creek, West Gold Creek, Granite Creek, Strong Creek, Lightning Creek and the Priest River for a radius of 100 yards.
3. Areas that provide important wildlife habitat as indicated with cross-hatching on this map. These areas are discussed in Section III of Regional Permit 27.

**Legend**

-  rgp27 excluded streams
-  rgp27 exclusions
-  Counties

