



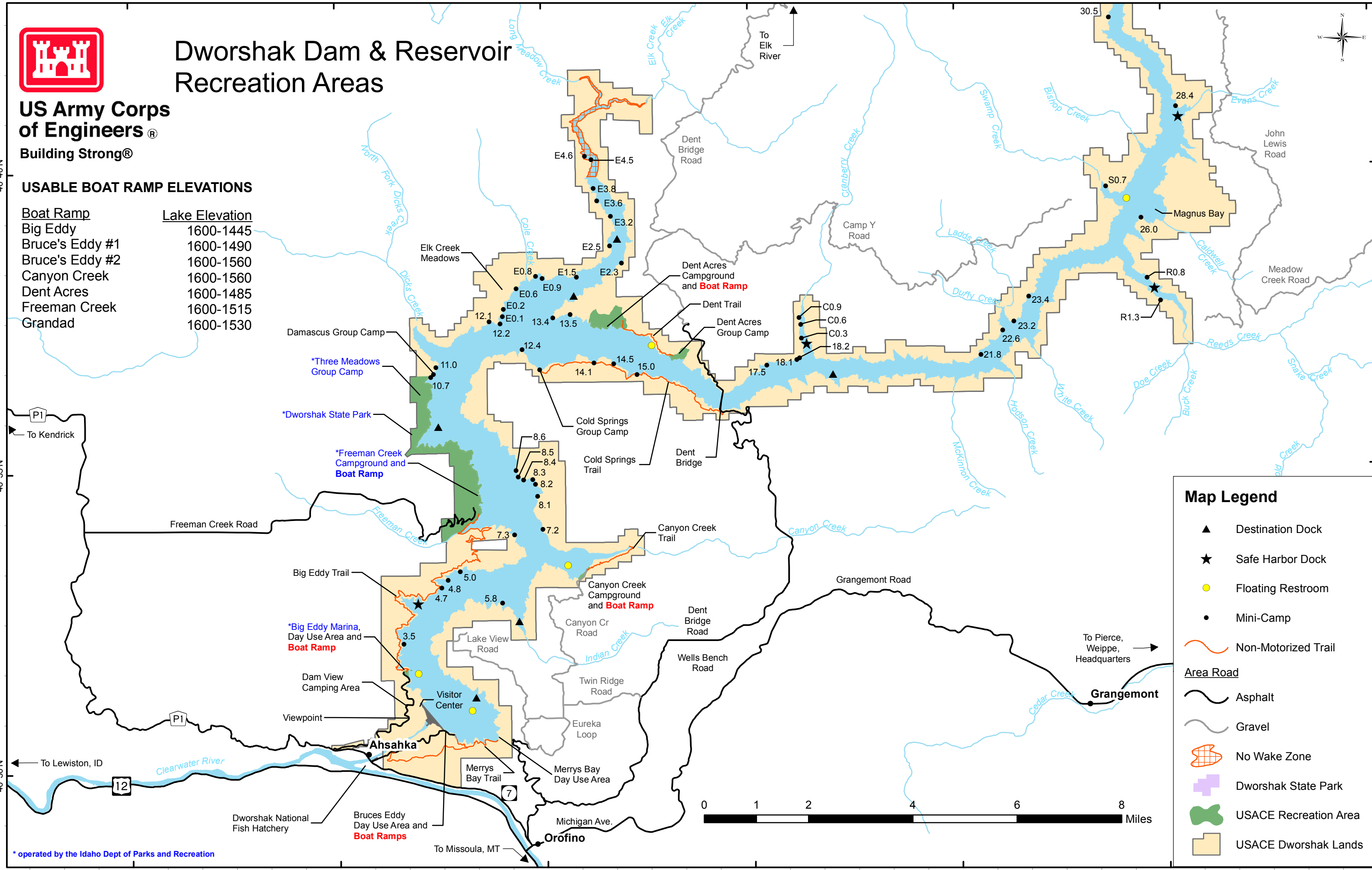
# Dworshak Dam & Reservoir Recreation Areas

**US Army Corps  
of Engineers®**

**Building Strong®**

## USABLE BOAT RAMP ELEVATIONS

Boat Ramp	Lake Elevation
Big Eddy	1600-1445
Bruce's Eddy #1	1600-1490
Bruce's Eddy #2	1600-1560
Canyon Creek	1600-1560
Dent Acres	1600-1485
Freeman Creek	1600-1515
Grandad	1600-1530



### Map Legend

- ▲ Destination Dock
- ★ Safe Harbor Dock
- Floating Restroom
- Mini-Camp
- Non-Motorized Trail
- Area Road
- Asphalt
- Gravel
- ⊘ No Wake Zone
- ⊕ Dworshak State Park
- 🌿 USACE Recreation Area
- 🏞️ USACE Dworshak Lands



\* operated by the Idaho Dept of Parks and Recreation

46°40'N  
46°35'N  
46°30'N

116°25'W 116°20'W 116°15'W 116°10'W 116°5'W 116°0'W

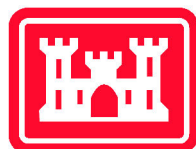
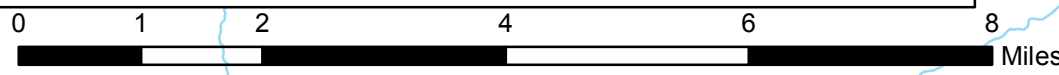
**RECREATION INFORMATION**

**Recorded Recreation and Water Level Information** 1-800-321-3198  
<http://www.nwd-wc.usace.army.mil/nww/rreports.htm>  
<http://www.nww.usace.army.mil/corpsoutdoors/dwa/temperatures.htm>  
**Dworshak Visitor Center** (208) 476-1255  
[http://www.nww.usace.army.mil/corpsoutdoors/siteMenu.asp?lake\\_id=105](http://www.nww.usace.army.mil/corpsoutdoors/siteMenu.asp?lake_id=105)  
**Dent Campground Entrance Station** (208) 476-9029

**Dworshak State Park**  
 Big Eddy Marina (ONLY FUEL VENDOR ON LAKE) (208) 476-5994  
 Freeman Creek Campground (208) 476-3132  
<http://parksandrecreation.idaho.gov/parks/dworshak.aspx>

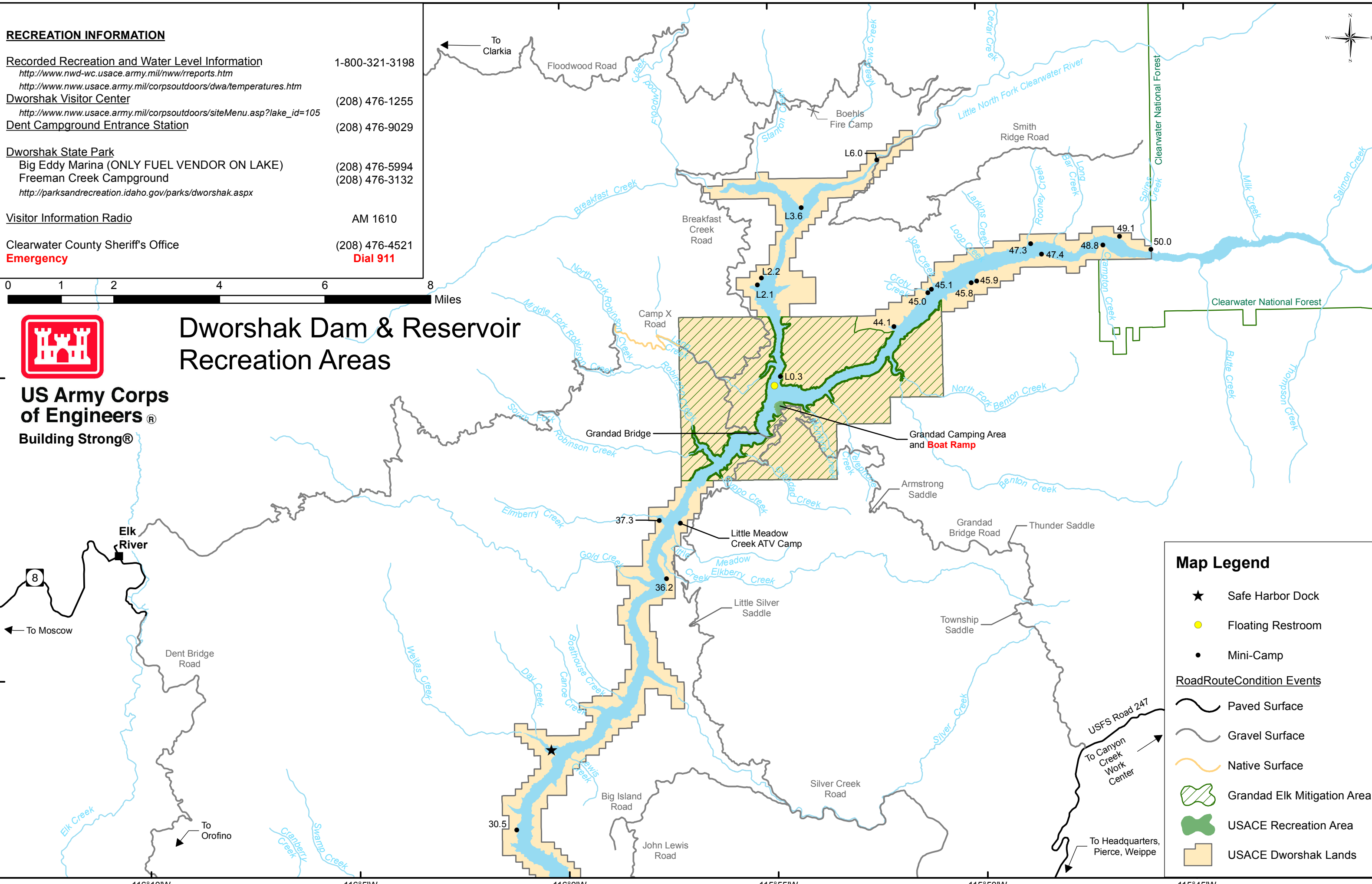
**Visitor Information Radio** AM 1610

**Clearwater County Sheriff's Office** (208) 476-4521  
**Emergency Dial 911**



**US Army Corps of Engineers®**  
 Building Strong®

# Dworshak Dam & Reservoir Recreation Areas



**Map Legend**

- ★ Safe Harbor Dock
- Floating Restroom
- Mini-Camp

**RoadRouteCondition Events**

- Paved Surface
- Gravel Surface
- Native Surface
- ▨ Grandad Elk Mitigation Area
- USACE Recreation Area
- USACE Dworshak Lands

46°55'N

46°50'N

46°45'N

116°10'W

116°5'W

116°0'W

115°55'W

115°50'W

115°45'W