

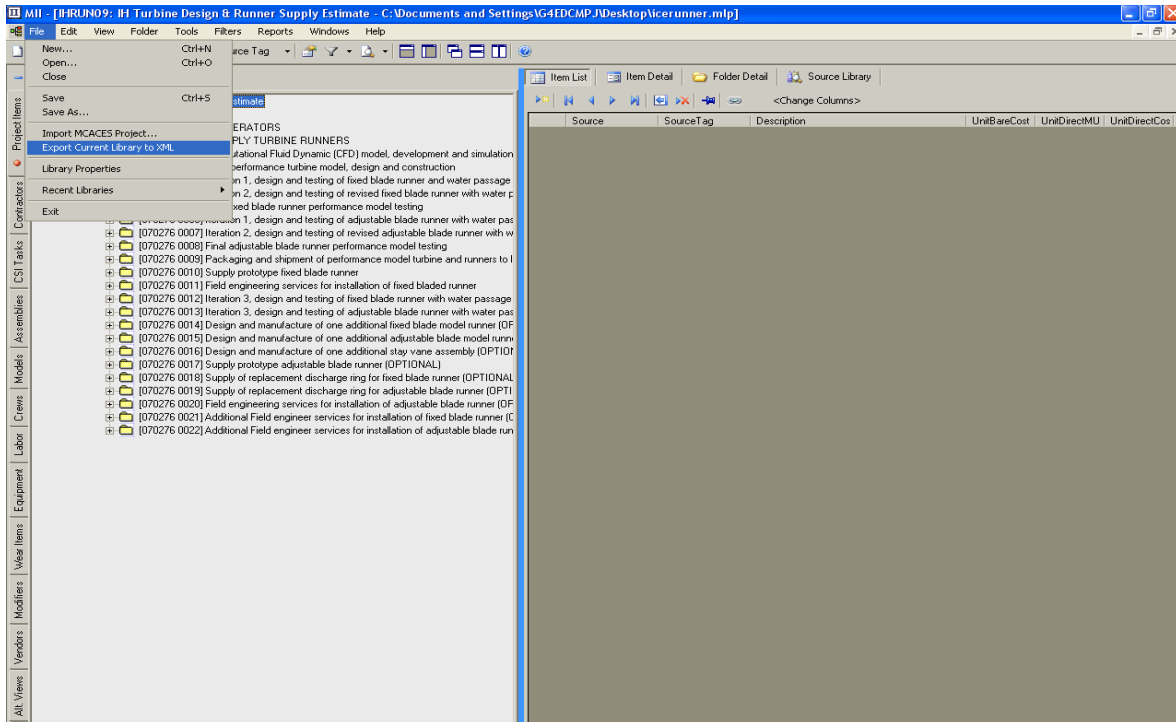
## How do I get my estimate into Excel from M2

In M2:

### File

#### Export Current Library to XML

Give it a location and name in the pop-up window- (recommend something different than the M2 file name and location)



Start MS Access:

### File

#### New

##### Select Blank Database

Give it a location and name in the pop-up window and select create

### File

#### Get External Data

##### Import

Select file type XML in the pop- pop up window and find your file  
Select Create in the window when located

Hit Ok – don't worry about all of the fields you want all of them.

Access will churn away in import the data. Most likely you will get an error message. Don't worry about it... The data you need will be there.

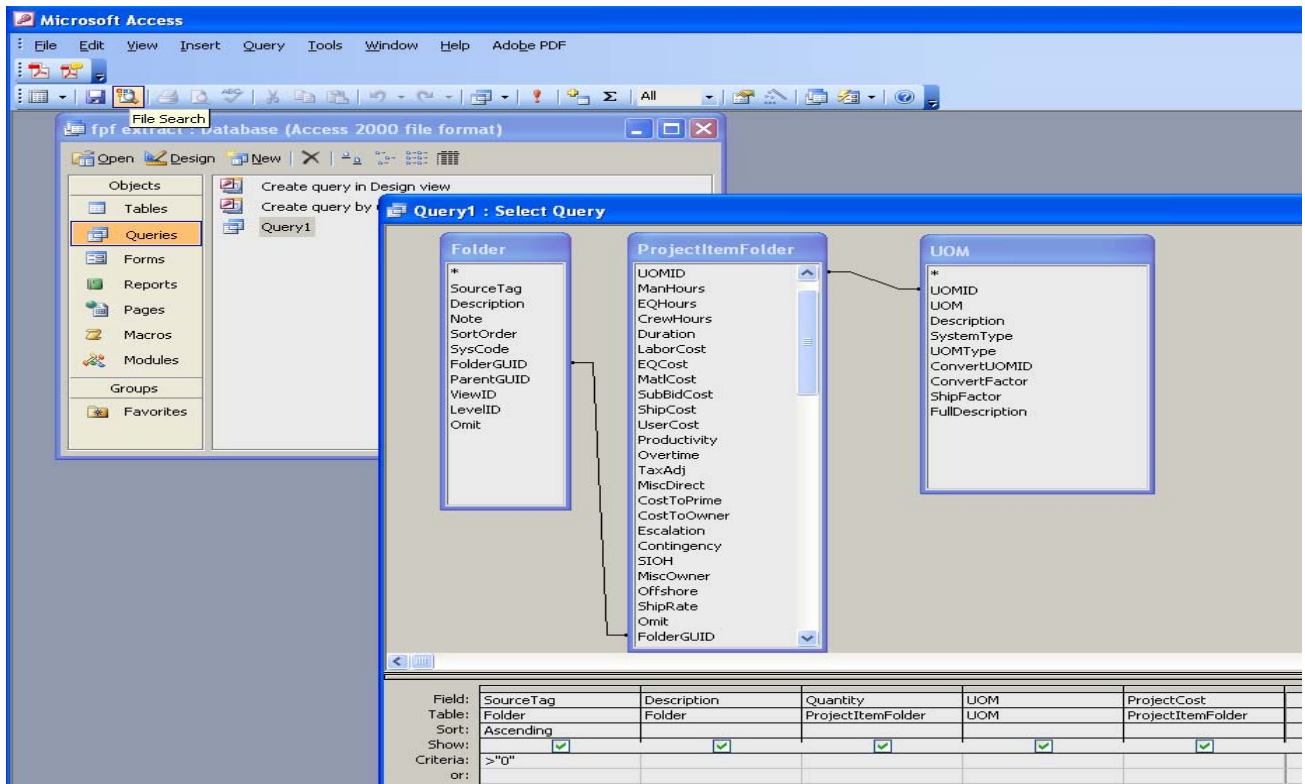
Now all of the data is in the ACCESS database. You need to create a query to get to what you want.

Usually I use **Folder**, **Project Item Folder** and **UOM**

Link Folder GUID and UOMID as shown.

I usually extract: **Source Tag**, **Description**, **Quantity**, **UOM**, and **Project Cost**

You can also extract things like Man Hours, EQ hours and Crew Hours to get the schedule..



Here is what the output looks like when you run the query:

| SourceTag       | Description                              | Quantity | UOM | ProjectCost   |
|-----------------|--|----------|-----|---------------|
| 060163          | FISH LOCKS AND ELEVATORS                 | 1        | EA  | 88779241.5698 |
| 0601630         | PHASE 3 CONSTRUCTION OF FPF              | 1        | EA  | 88779241.5698 |
| 060163-02-0h    | Barrier Fencing @ Deck 1180              | 600      | LF  | 58283.5230978 |
| 060163-02-8i    | Sedimentation Pond & Items               | 1        | EA  | 12943.3851284 |
| 0601631-02-04a  | DEBRIS BOOM ON DAM                       | 1        | EA  | 784078.38437  |
| 0601631-02-0a   | Culvert, Rock Excavation                 | 75       | BCY | 7566.25604971 |
| 0601631-02-0b   | Culvert, 24" Diameter                    | 120      | LF  | 13438.0294286 |
| 0601631-02-0c   | Culvert, Backfill                        | 57       | BCY | 5427.32892216 |
| 0601631-02-0d   | Dam Fill, @ 1181 Deck                    | 42600    | ECY | 3226810.62464 |
| 0601631-02-0e   | Base Course, 10" Thk @ 1181 Deck         | 1380     | ECY | 141580.147775 |
| 0601631-02-0f   | Top Course 6" Thk @ 1181 Deck            | 830      | ECY | 78322.8157035 |
| 0601631-02-0g   | Concrete Slab 12" Thk @ 1181 Deck        | 1103     | CY  | 1171136.77287 |
| 0601631-02-11a  | A-R # 1, Road Fill, Rip Rap Removal      | 2300     | CY  | 215568.641736 |
| 0601631-02-11b  | A-R # 1, Road Fill, Retaining Wall Remov | 220      | SF  | 4369.99245758 |
| 0601631-02-11c  | A-R # 1, Road Fill, 159' Long            | 2390     | CY  | 136439.918088 |
| 0601631-02-11e  | A-R # 1, Road Fill, Gravel Fill          | 850      | ECY | 117452.511339 |
| 0601631-02-11f  | A-R # 1, Road Fill, Rip Rap Placement    | 3300     | CY  | 862652.973621 |
| 0601631-02-12a  | A-R # 2, Road Fill, 136' Long            | 820      | ECY | 75168.9869041 |
| 0601631-02-15a  | ROAD MAINTENANCE                         | 30       | MO  | 0             |
| 0601631-02-3    | OFF LOADING RAMP                         | 1        | LS  | 81662.8648841 |
| 0601631-02-3-0i | Off Loading Ramp                         | 1        | EA  | 81662.8648841 |
| 0601631-02-4ab  | Anchoring of debris boom                 | 1        | LS  | 41312.1064179 |
| 0601631-02-4b   | Anchor Winch                             | 1        | EA  | 116070.741902 |
| 0601631-02-4c   | Debris Boom attaching to Dam             | 560      | LF  | 393691.650804 |
| 0601631-02-4d   | Dam Support / Floating Mooring           | 1        | EA  | 233003.885246 |
| 0601631-02-6 s: | Sewer Line, Excavaton                    | 1000     | BCY | 3987.61314988 |
| 0601631-02-6 sl | Sewer Line, 4" Dia Pipe, Pressurized     | 4000     | LF  | 60921.0373235 |
| 0601631-02-6 si | Sewer Line, Backfill                     | 900      | ECY | 83497.3680333 |
| 0601631-02-6 sj | Tower Drain Line, Backfill               | 900      | ECY | 83497.3680333 |
| 0601631-02-6 sk | Pump station                             | 1        | EA  | 125150.644358 |
| 0601631-02-6 tl | Tower Drain Line, Excavaton              | 900      | BCY | 4430.68127765 |
| 0601631-02-6 tm | Tower Drain Line, 8" Pipe, Pressurized   | 4000     | LF  | 161807.495241 |
| 0601631-02-6 wn | Water Line, Excavation                   | 900      | BCY | 3987.61314988 |
| 0601631-02-6 wp | Water Line, 2" Dia Pipe                  | 4000     | LF  | 24591.6816043 |
| 0601631-02-6 wq | Water Line, Backfill                     | 900      | CCY | 75147.63123   |
| 0601631-02-7a   | Soil Runoff Fence & Misc                 | 3000     | LF  | 20493.1913080 |

This data can be worked with- ie sorted and pasted into EXCEL, PROJECT, and Primavera.

TIP: Make the source tags easy to sort based on your abilities and id them so that you can make them total to something workable!

Sometimes I will go thru an estimate and make the source tags for the data I want easy to identify i.e. A, B, C, BID ITEM 01, BID ITEM 02, or in ALL CAPS.

The key is: **Make it easy on yourself to get the data you want.** You can write queries that can sort it out by the numbers of digits etc, but it can get way too complex and you can spend more time looking for an error than by just brute force making the source tags in the estimate something identifiable. (Once you have seen how much time it can save you, you will probably start laying your estimate in an easy to extract manner from the start.)

Note: the level field in M2 doesn't seem to work so you can't sort by level... Sorry!