



# Dworshak Dam & Reservoir Recreation Areas

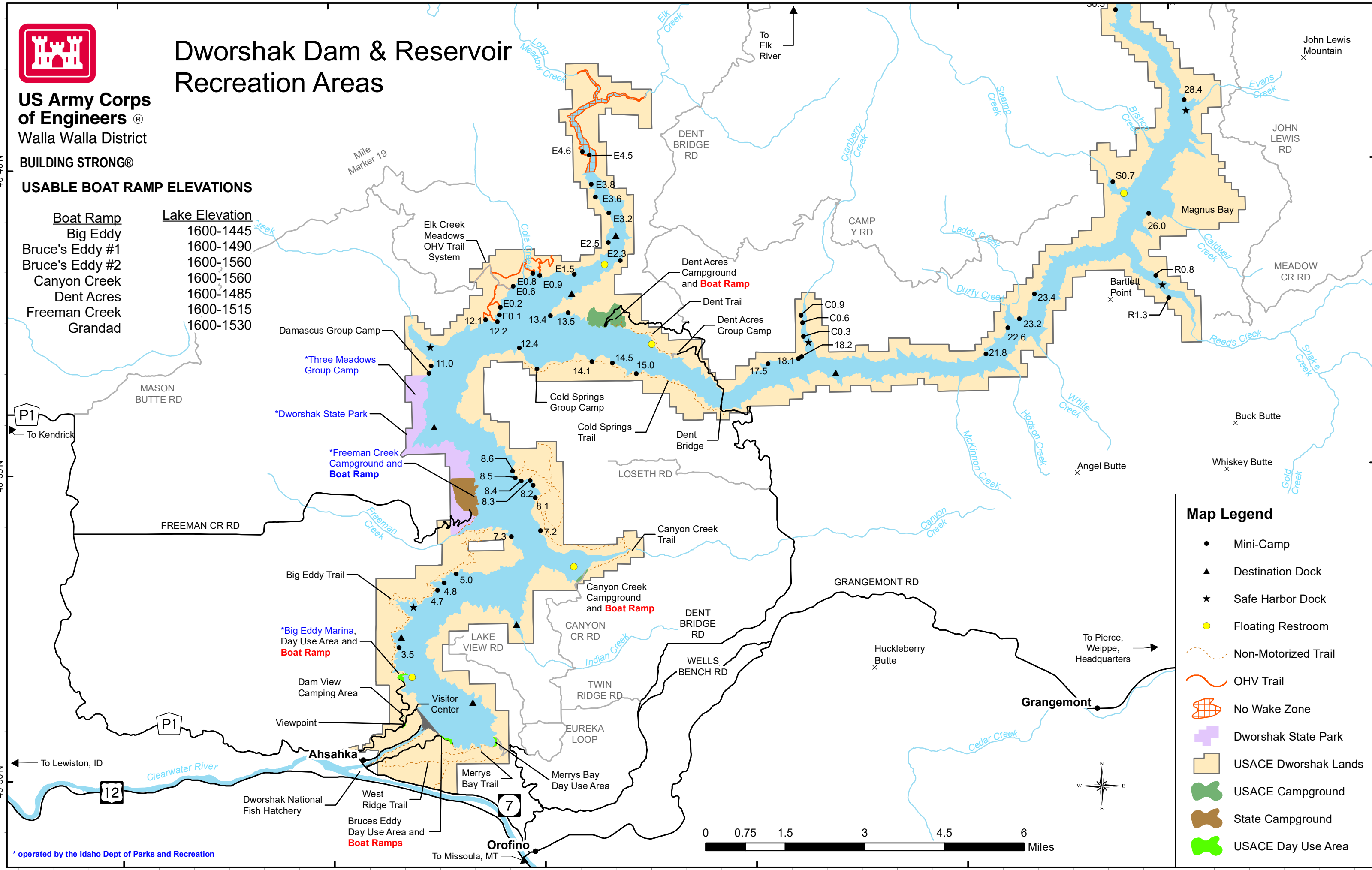
**US Army Corps  
of Engineers**®

Walla Walla District

**BUILDING STRONG**®

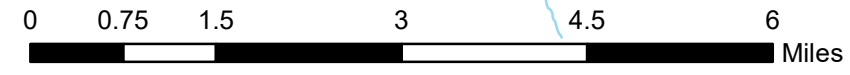
## USABLE BOAT RAMP ELEVATIONS

Boat Ramp	Lake Elevation
Big Eddy	1600-1445
Bruce's Eddy #1	1600-1490
Bruce's Eddy #2	1600-1560
Canyon Creek	1600-1560
Dent Acres	1600-1485
Freeman Creek	1600-1515
Grandad	1600-1530



### Map Legend

- Mini-Camp
- ▲ Destination Dock
- ★ Safe Harbor Dock
- Floating Restroom
- - - Non-Motorized Trail
- ~ OHV Trail
- ⊞ No Wake Zone
- ⊞ Dworshak State Park
- ⊞ USACE Dworshak Lands
- ⊞ USACE Campground
- ⊞ State Campground
- ⊞ USACE Day Use Area



\* operated by the Idaho Dept of Parks and Recreation

46°40'N  
46°35'N  
46°30'N

116°25'W 116°20'W 116°15'W 116°10'W 116°5'W 116°0'W

**RECREATION INFORMATION**

**Dworshak Recreation Areas**

<http://www.nww.usace.army.mil/Missions/Recreation/DworshakDamandReservoir.aspx>

**Water Temperature and Water Level Information**

<http://www.nww.usace.army.mil/Locations/DistrictLocksandDams/DworshakDamandReservoir.aspx>  
<http://www.nwd-wc.usace.army.mil/nww/rreports.htm>

**Dworshak Visitor Center.....(208) 476-1255**

<http://www.nww.usace.army.mil/Missions/Recreation/DworshakDamandReservoir/DworshakVisitorCenter.aspx>

**Dent Campground**

Entrance Station.....(208) 476-9029

Dent Campground Reservations.....1-877-444-6777 or online at: <http://www.recreation.gov>

**Dworshak State Park**

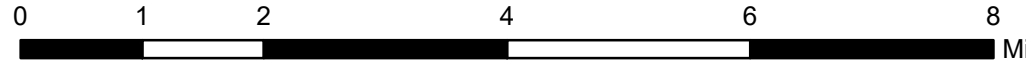
Big Eddy Marina - ONLY FUEL VENDOR ON LAKE.....(208) 476-5994

Freeman Creek Campground.....(208) 476-3132

<http://parksandrecreation.idaho.gov/parks/dworshak.aspx>

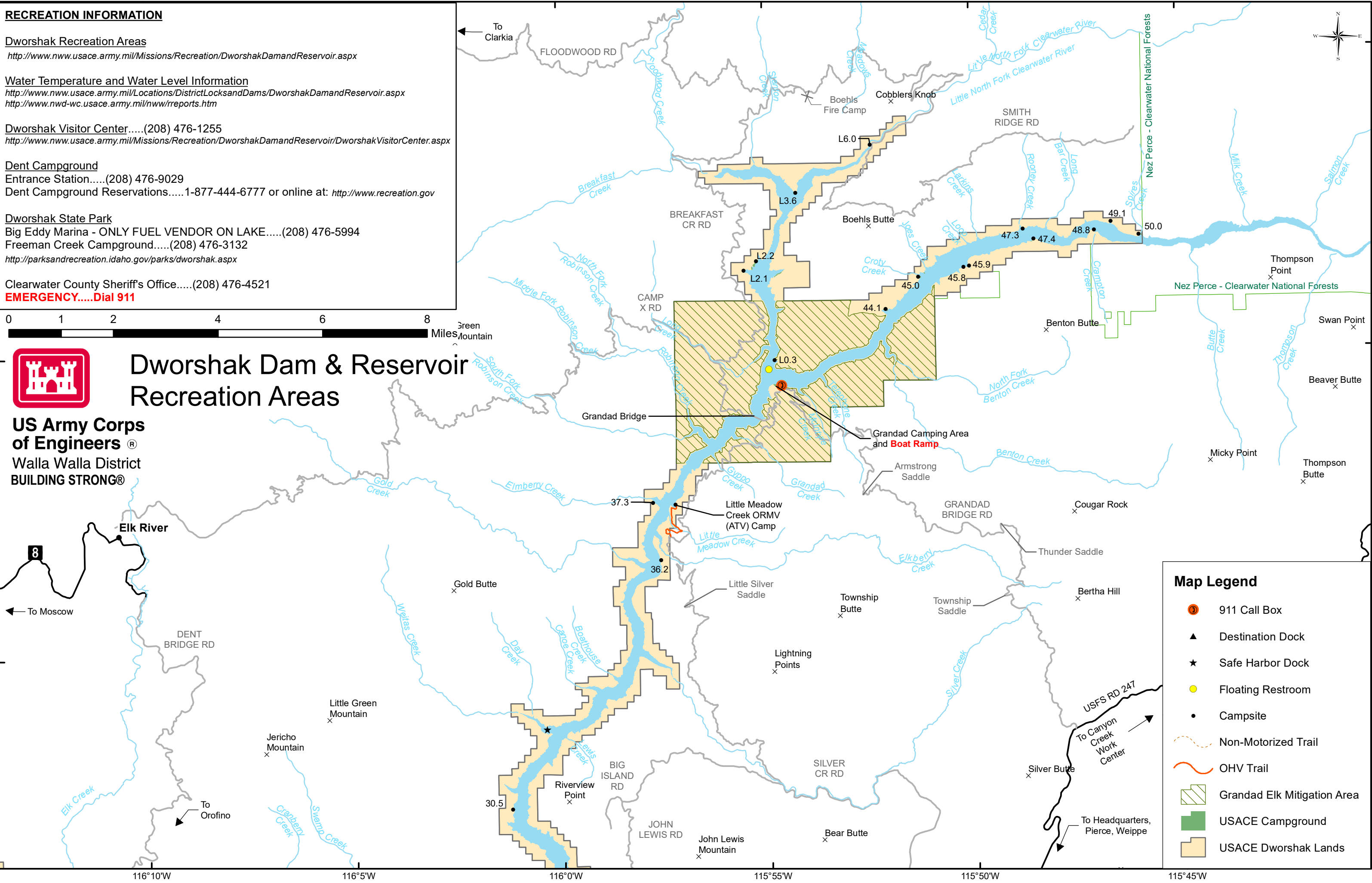
Clearwater County Sheriff's Office.....(208) 476-4521

**EMERGENCY.....Dial 911**



# Dworshak Dam & Reservoir Recreation Areas

**US Army Corps  
of Engineers®**  
Walla Walla District  
**BUILDING STRONG®**



### Map Legend

- 911 Call Box
- Destination Dock
- Safe Harbor Dock
- Floating Restroom
- Campsite
- Non-Motorized Trail
- OHV Trail
- Grandad Elk Mitigation Area
- USACE Campground
- USACE Dworshak Lands