

APPENDIX C- LEGISLATIVE HISTORY OF ICE HARBOR LOCK AND DAM

Item 1 - Legislative History

The legislative history leading to authorization of Ice Harbor Lock and Dam is lengthy, dating back to 1902, when the first formal proposal for the improvement of the lower Snake River was adopted by Congress. The Rivers and Harbors Acts of 1910 and 1935 authorized channel improvement along the Snake River, providing a channel dimension of 60-foot width and 5-foot depth. A synopsis of subsequent important legislation and related actions has been prepared to afford an understanding of events leading to the construction of Ice Harbor Lock and Dam.

a. Rivers and Harbors Act of 1945

Public Law 14, Seventy-Ninth Congress, First Session, authorized construction of four locks and dams at river miles 4, 57, 93, and 135 on the Snake River, supplemented by open-channel improvement to provide a minimum depth of 5 feet over a bottom width of 150 feet outside the pools. The authorized plan was presented in the earlier House Document 704, Seventy-Fifth Congress, Third Session, which proposed that the open-river improvement be replaced by six locks and dams, when justified.

(1) Washington, D.C., Public Hearings

Proponents of House Document 704 held a public hearing in Washington, D.C., in 1945, where they presented voluminous data in support of immediate slackwater navigation to Lewiston; and the economic consequences to the nation and the region which would be caused by any delay.

(2) Local Public Hearings

At that time, local interests in general wanted the adoption of a comprehensive plan in the interest of navigation for the coordinated development of the Columbia and Snake Rivers, through a series of locks and dams from The Dalles, Oregon, to Lewiston, Idaho.

(3) Fishing Interests

The fishery interests, in general, did not oppose the adoption of a comprehensive plan of improvement, but desired that further developments on the Columbia and Snake Rivers be held in abeyance until the effect on the fishing industry of Bonneville and Grand Coulee Dams was determined.

b. House Document 531

At the request of Congress, the Corps of Engineers undertook a complete review of the original reports on the Columbia River and tributaries. Studies for that review were carried

APPENDIX C- LEGISLATIVE HISTORY OF ICE HARBOR LOCK AND DAM

on during the last half of the 1940s, and resulted in House Document No. 531, Eighty-First Congress, Second Session, dated March 20, 1950. That report, which is the basis for much of the water resource development that has taken place in the Columbia River Basin during the past two decades, considered four lower Snake River dams at River Miles 9.7, 44.7, 72.2, and 113.1; and they became a part of the overall plan of development. In House Document 531, Ice Harbor Dam was planned for River Mile 9.7, moving it upstream from the previously planned location at River Mile 4.

c. Construction Funding

Funds for Ice Harbor Lock and Dam construction were first appropriated by Congress for fiscal year 1956. The first construction work was begun in the fall of calendar year 1956. Appropriations were received annually as construction proceeded, so there were numerous public laws which appropriated funds for Ice Harbor Lock and Dam.

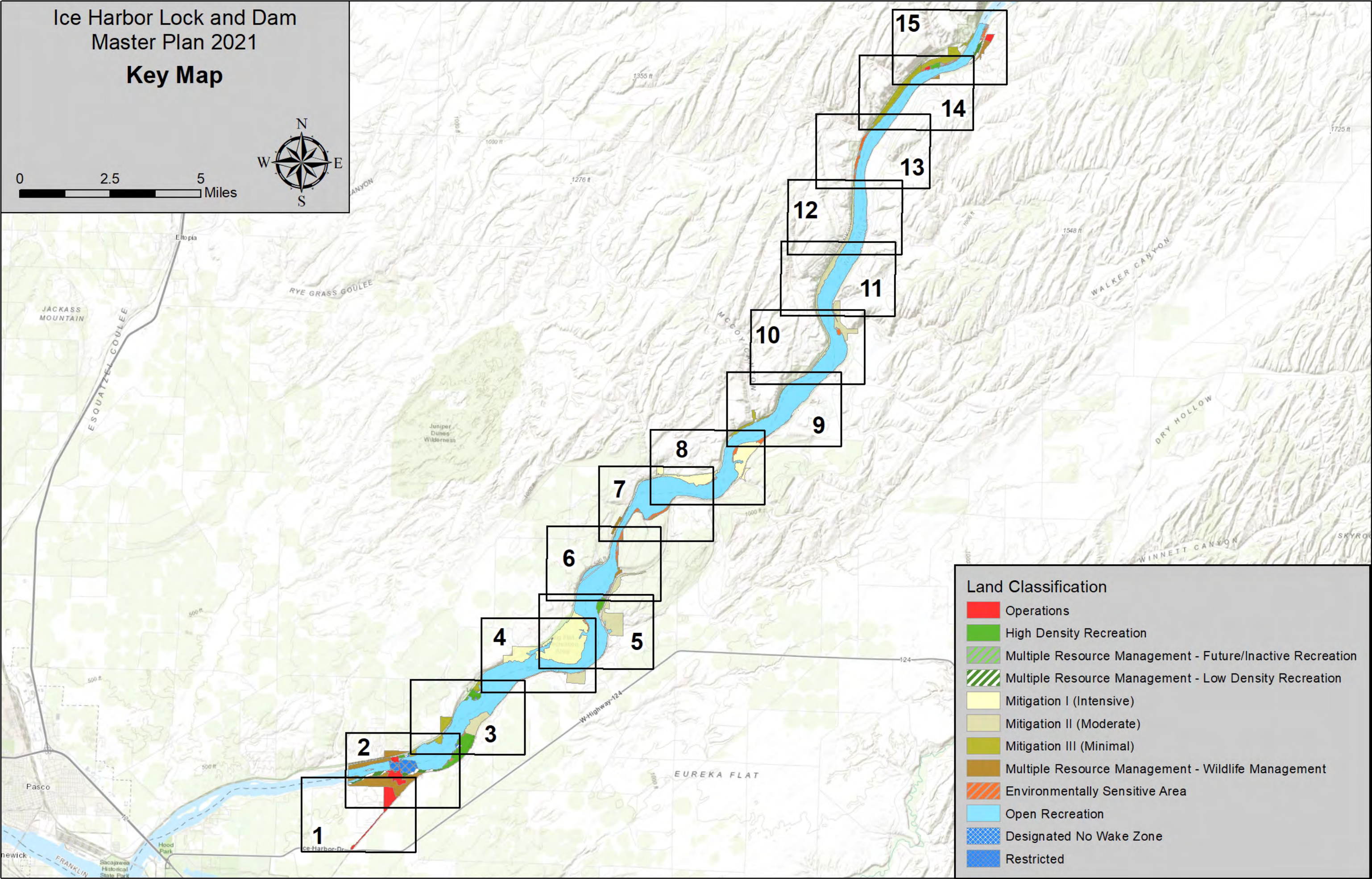
Item 2 - Authorities

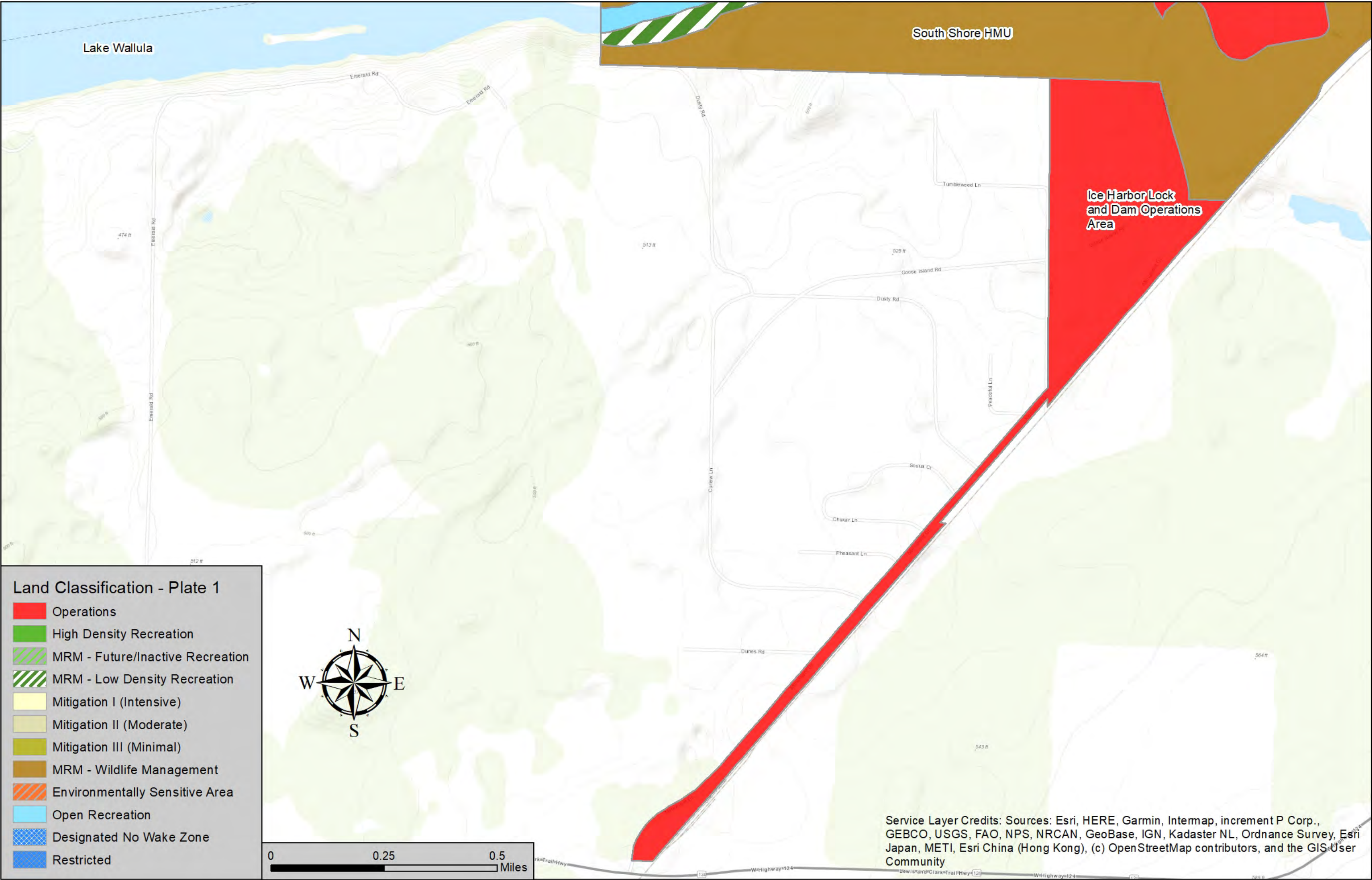
Authorities specifically related to the management of recreation and public access are found in statutes, public laws, federal regulations; Executive Orders (EO); and the Corps ERs, Engineer Manuals (EM), and EPs. They include, but are not necessarily limited to, those listed below:

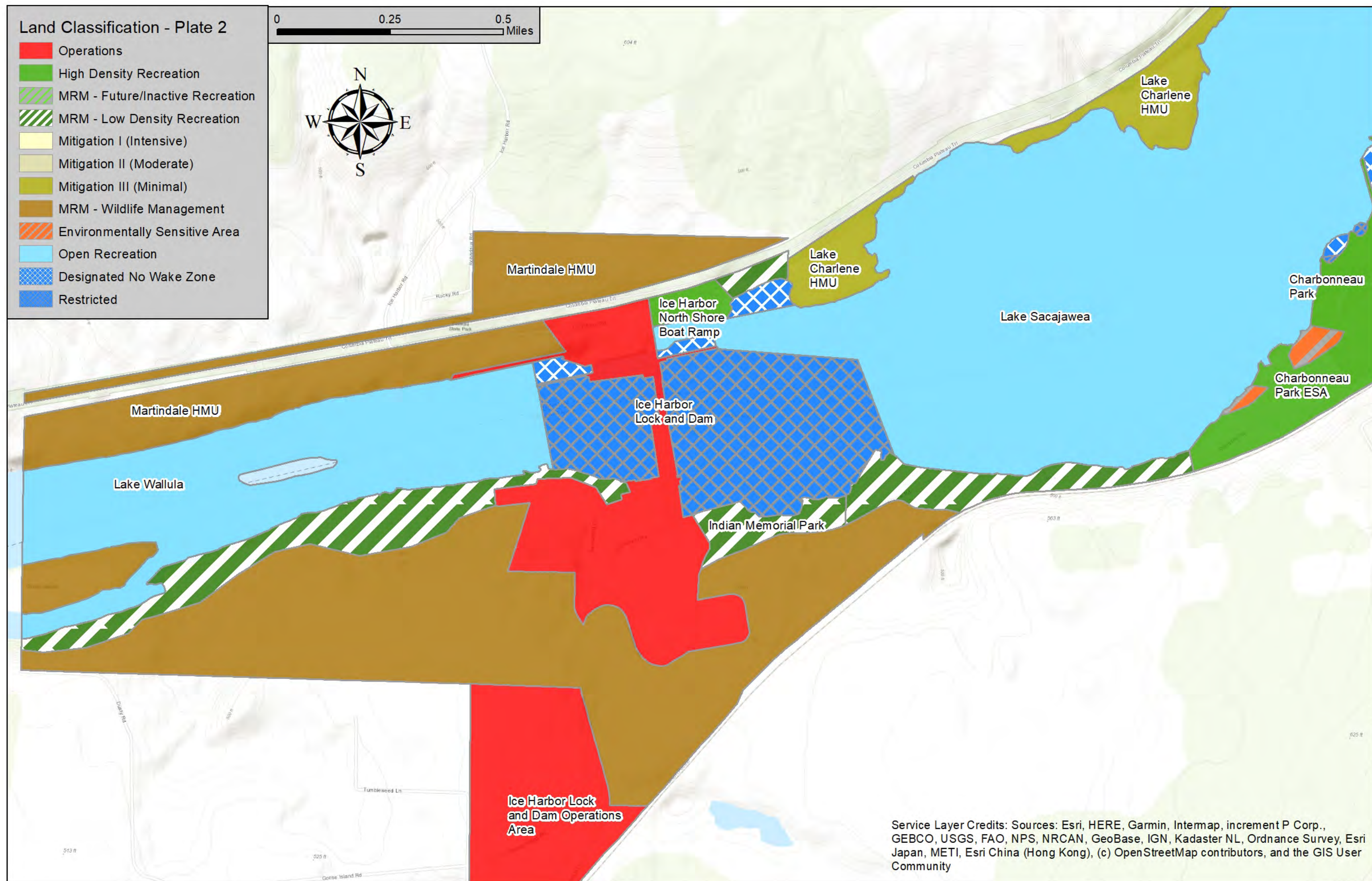
| | |
|--------------|--|
| 36 CFR § 79 | Curation of Federally-Owned and Administered Archaeological Collections, July 1, 2012 |
| 36 CFR § 327 | Rules and Regulations Governing Public Use of Corps of Engineers Water Resources Development Projects, February 11, 2000 |
| PL 78-534 | Flood Control Act of 1944, December 22, 1944 |
| PL 79-14 | River and Harbor Act of 1945 |
| PL 88-578 | Land and Water conservation Fund Act of 1965, September 3, 1964 |
| PL 96-95 | Archaeological Resources Protection Act (ARPA) of 1979 |
| PL 101-601 | Native American Graves Protection and Repatriation Act (NAGPRA) |
| PL 102-575 | National Historic Preservation Act (NHPA) of 1966 |
| EO 11989 | Off-Road Vehicles in Public Lands, May 24, 1977 (amends EO 11644) |
| EO 13751 | Safeguarding the Nation from the Impacts of Invasive Species, December 8, 2016 |
| EM 385-1-1 | Safety and Health Requirements (Corps 2014b) |

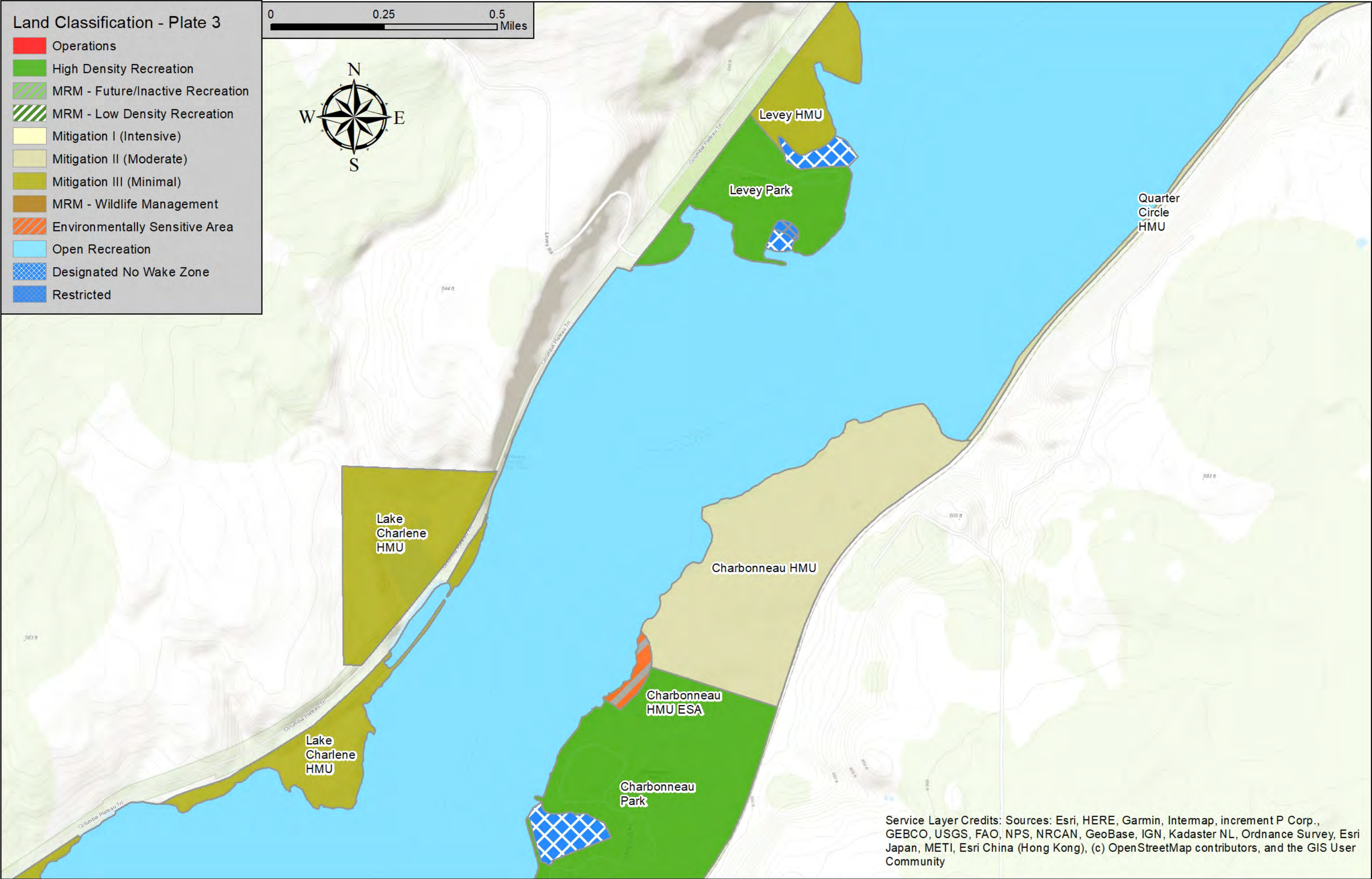
APPENDIX C- LEGISLATIVE HISTORY OF ICE HARBOR LOCK AND DAM

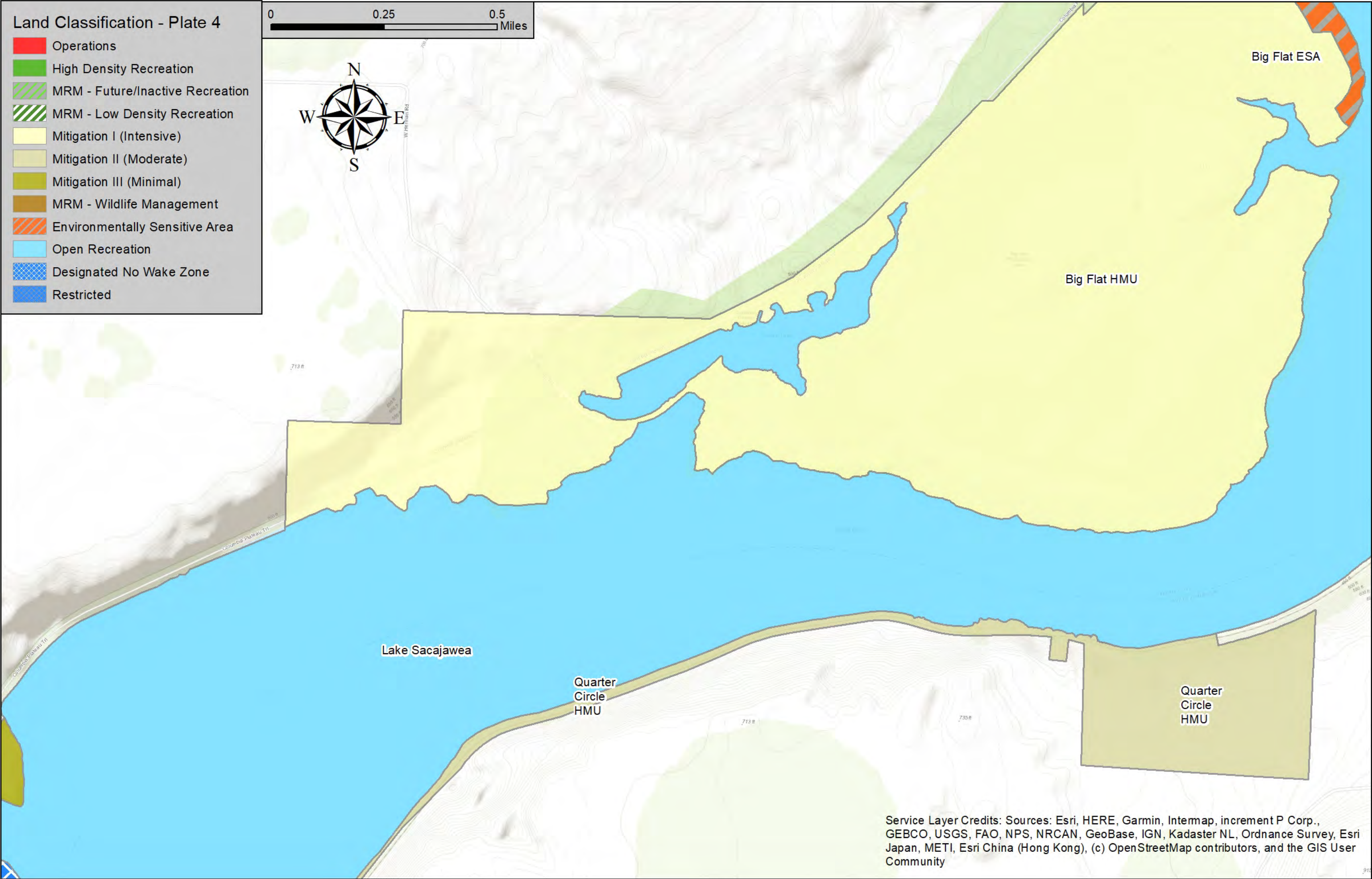
| | |
|---------------|---|
| EM 1110-2-410 | Design of Recreation Areas and Facilities Access and Circulation, December 1982 (Corps 1982) |
| EP 310-1-6 | Graphic Standards Manual, September 1994 (Corps 1994) |
| EP 1130-2-540 | Environmental Stewardship Operations and Maintenance Guidance and Procedures, November 1996 (Corps 1996a) |
| EP 1130-2-550 | Recreation Operations and Maintenance Guidance and Procedures, November 1996 (revised January 2013) (Corps 1996b) |
| ER 200-1-5 | Policy for Implementation and Integrated Application of the U.S. Army Corps of Engineers Environmental Operating Principles (EOP) and Doctrine, October 2003 (Corps 2003) |
| ER 405-1-12 | Real Estate Handbook, Chapter 8, November 1985 (Corps 1985) |
| ER 1105-2-100 | Planning Guidance Notebook, April 2000 (Corps 2000) |
| ER 1110-2-400 | Design of Recreation Sites, Areas, and Facilities, May 1988 (Corps 1988) |
| ER 1130-2-540 | Environmental Stewardship Operations and Maintenance Policies, November 1996 (Corps 1996c) |
| ER 1130-2-550 | Recreation Operations and Maintenance Policies, November 1996 (Corps 1996d) |
| ER 1165-2-400 | Recreation Planning, Development, and Management Policies, August 1985 (Corps 1985b) |

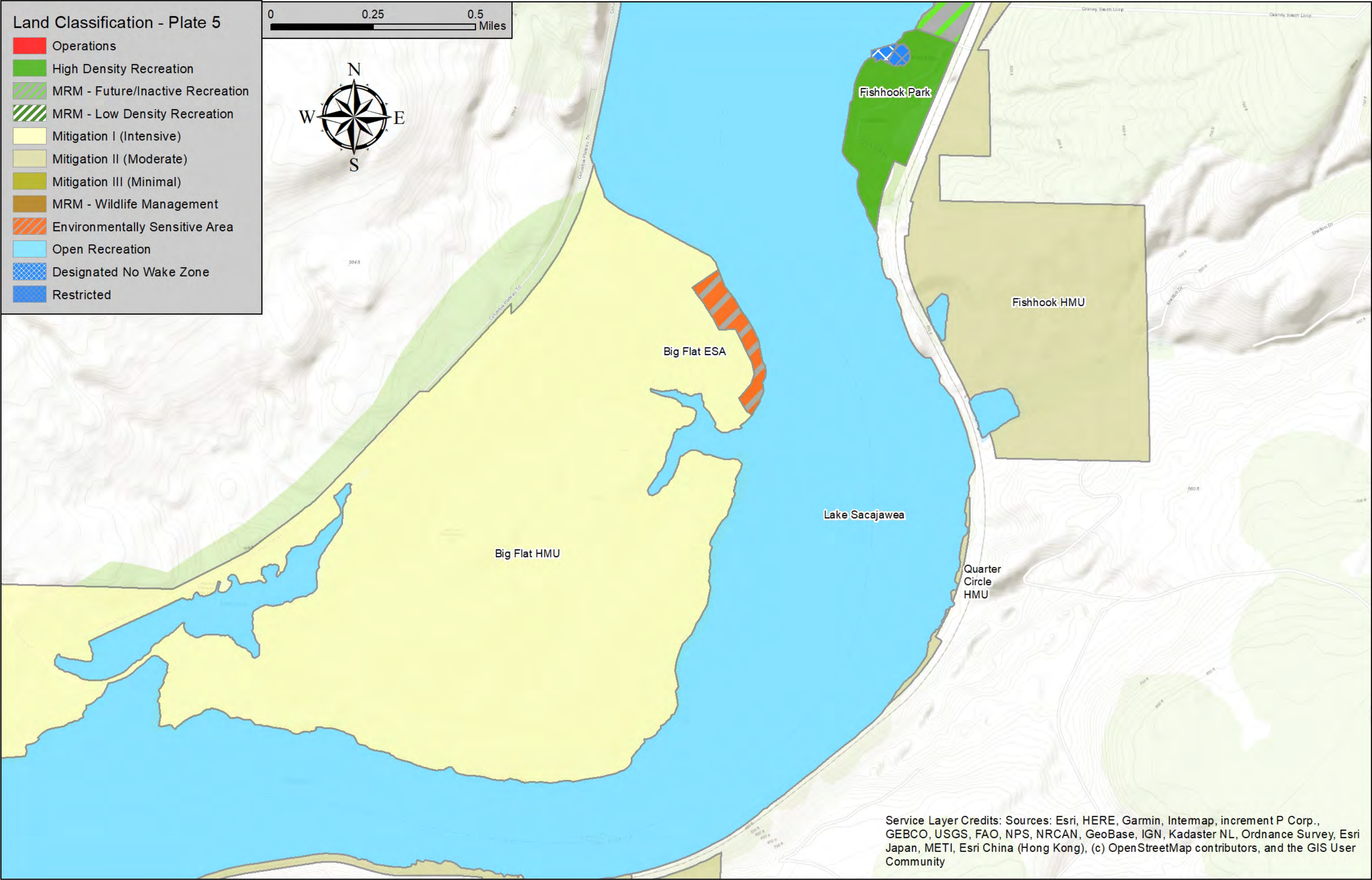


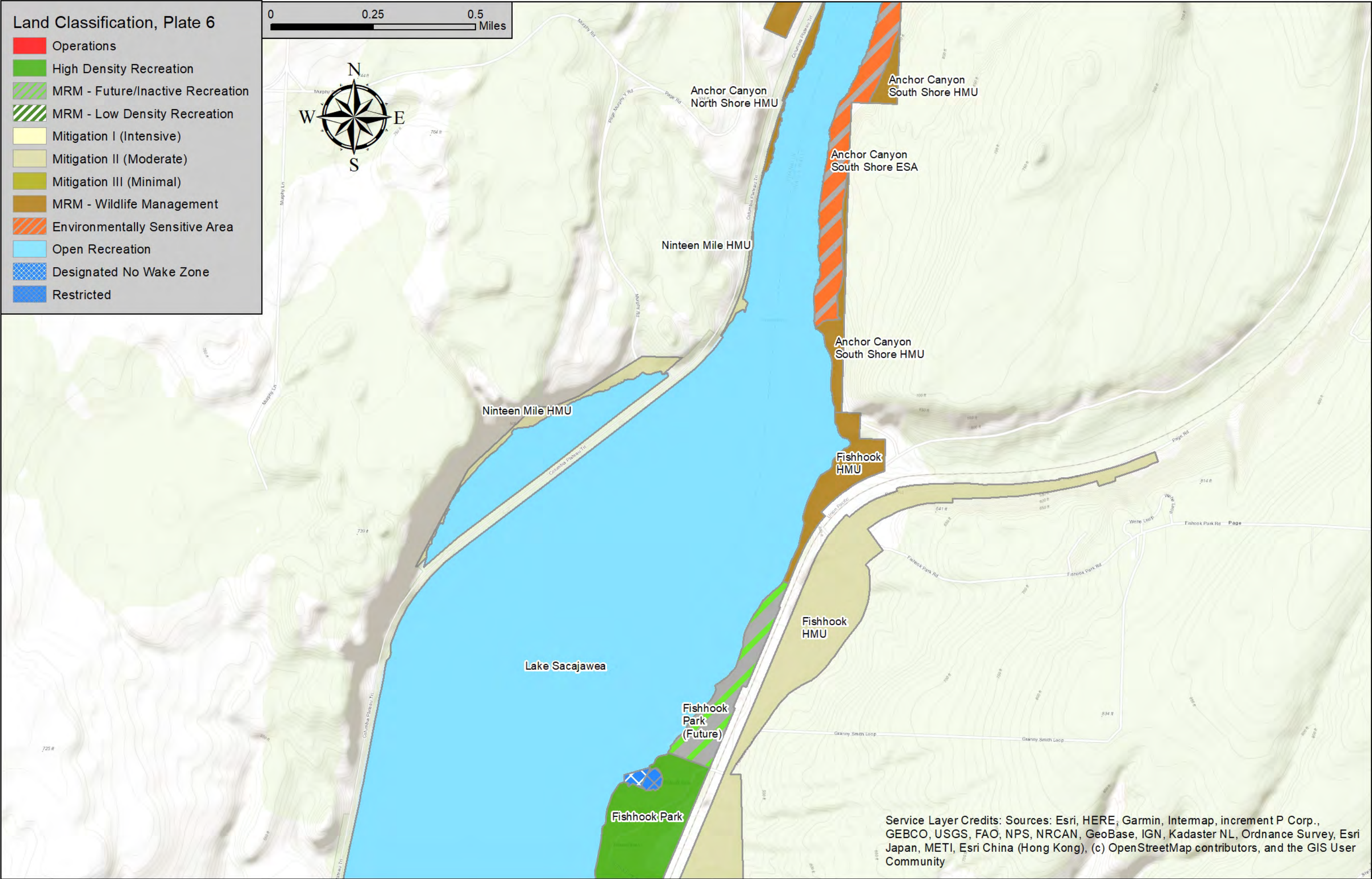


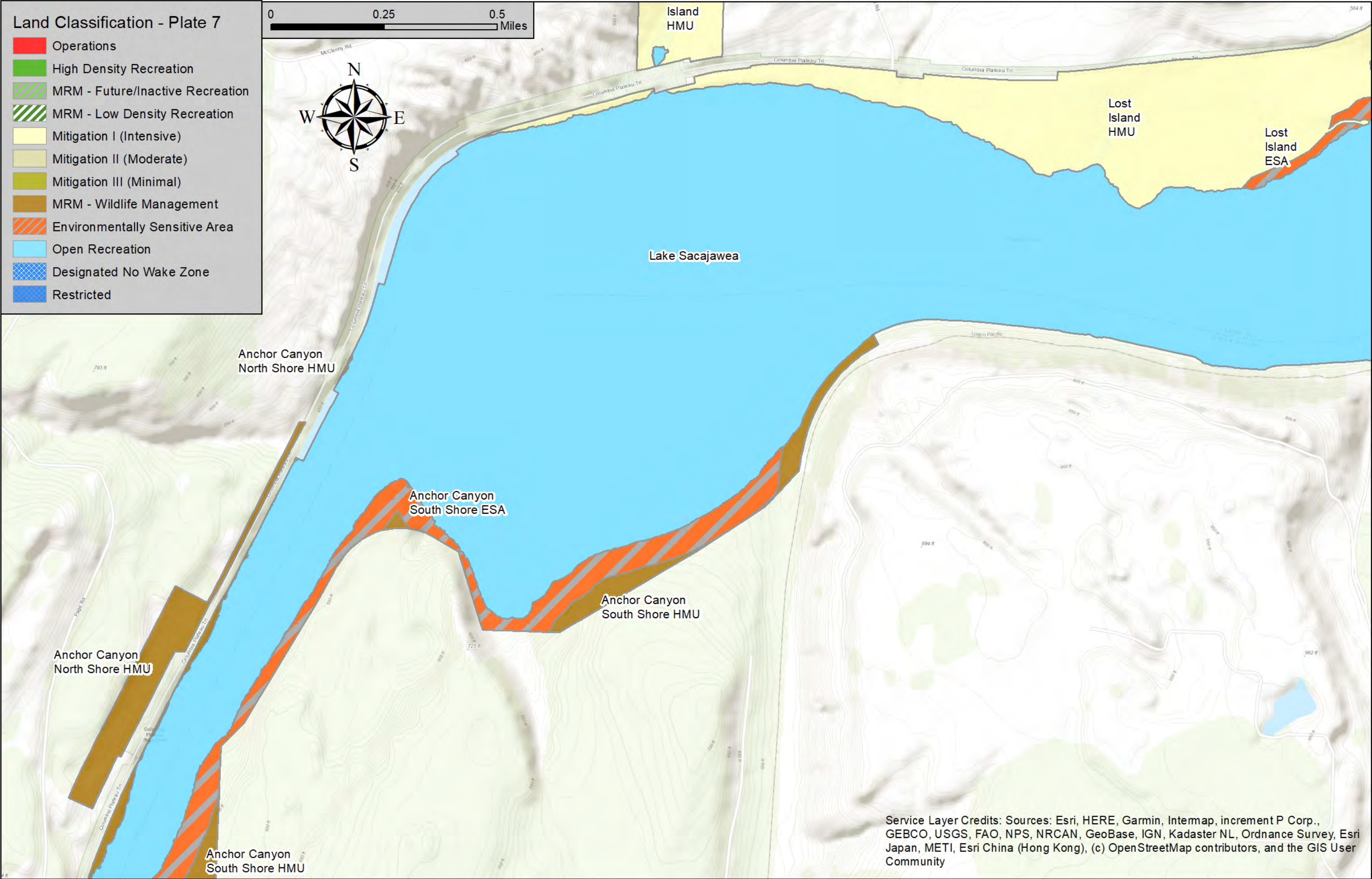


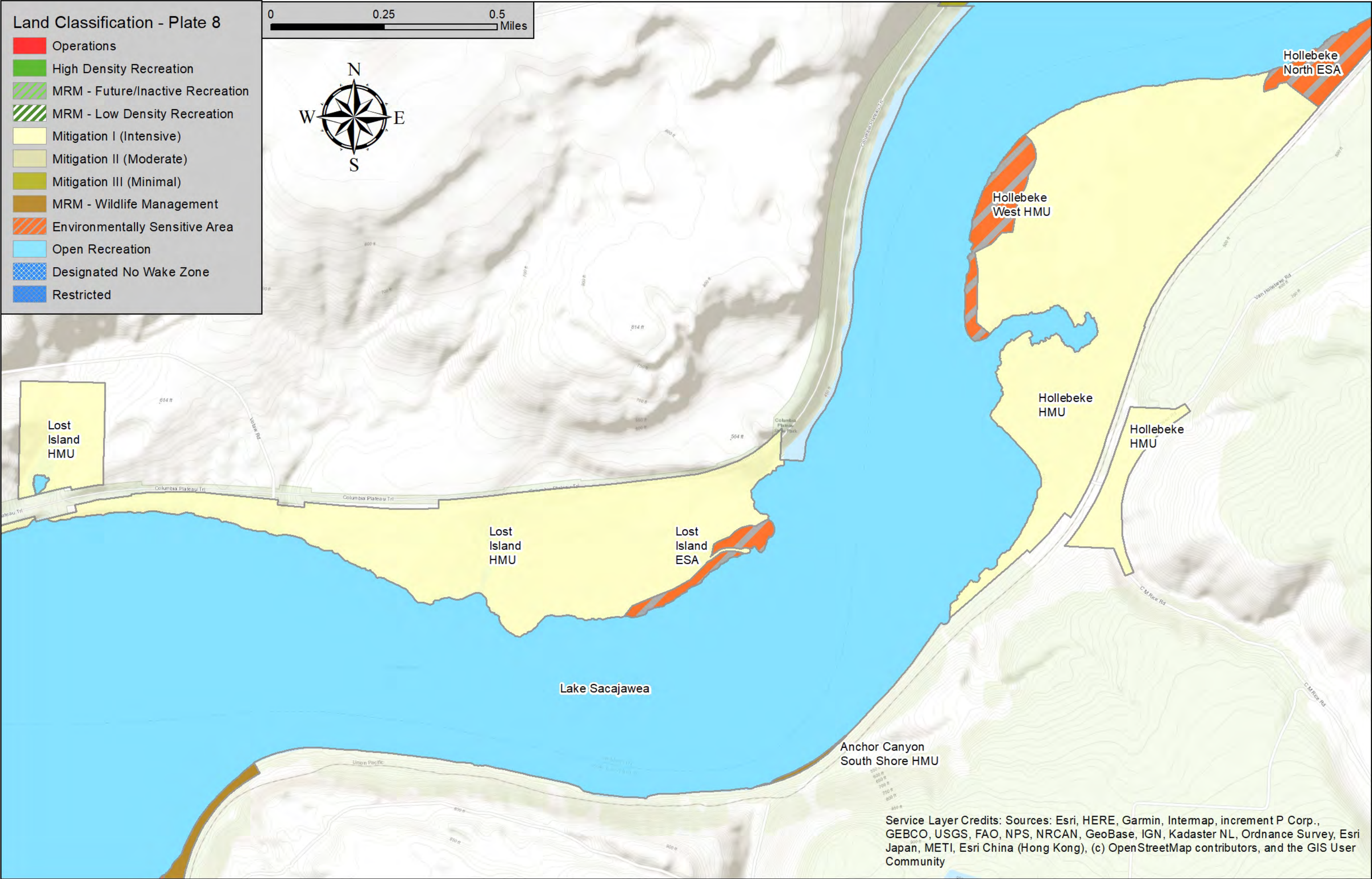


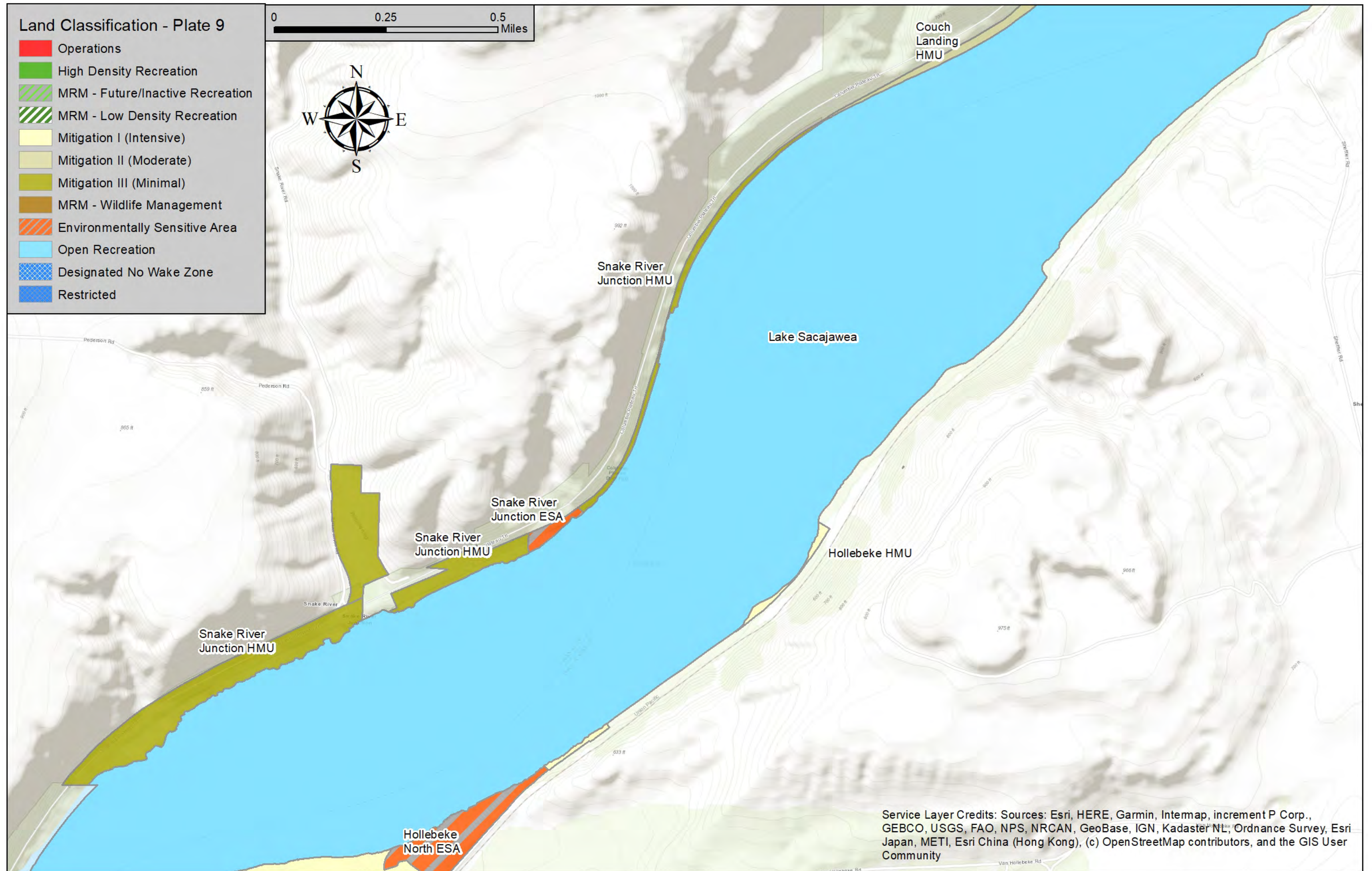


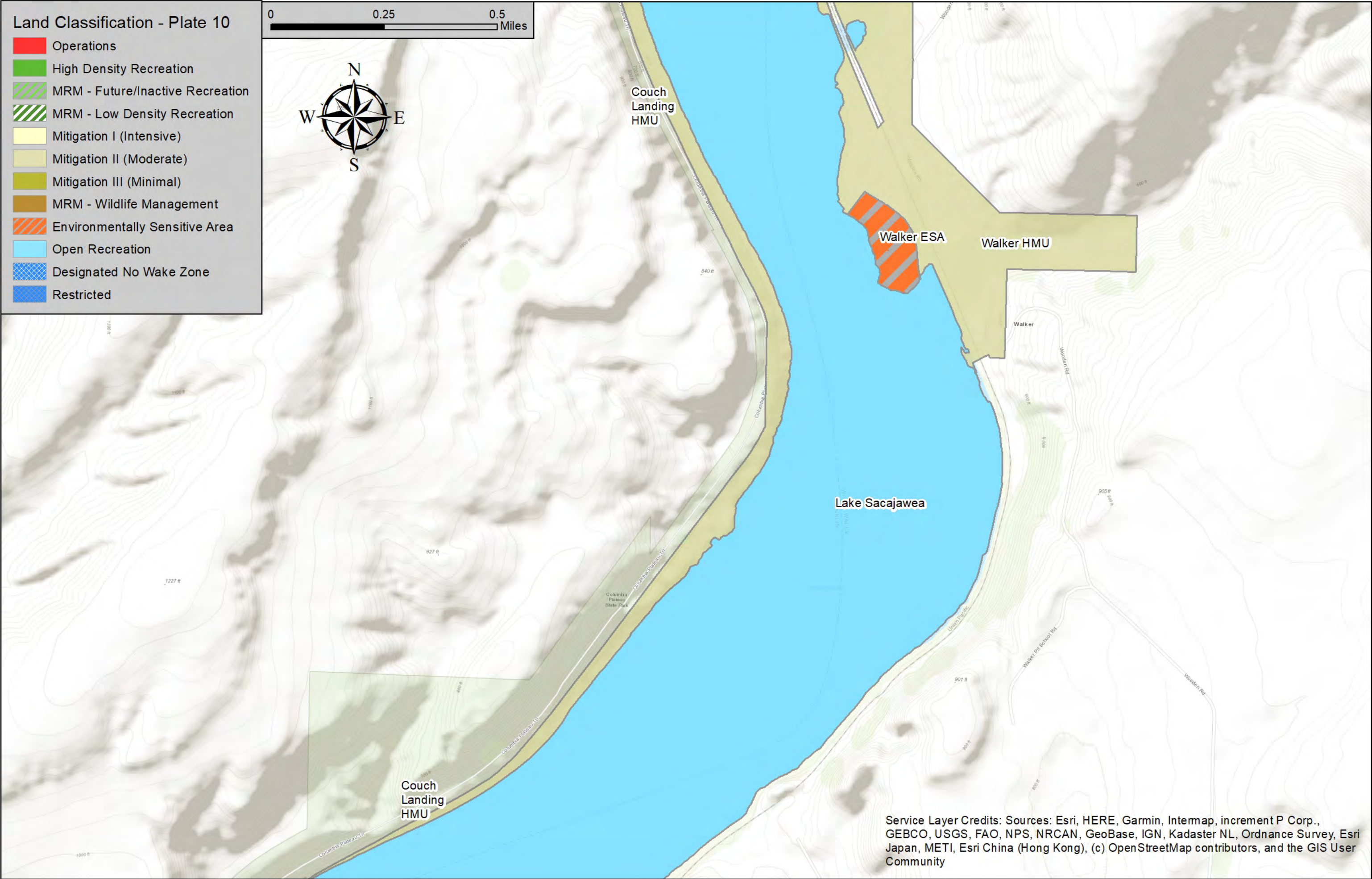


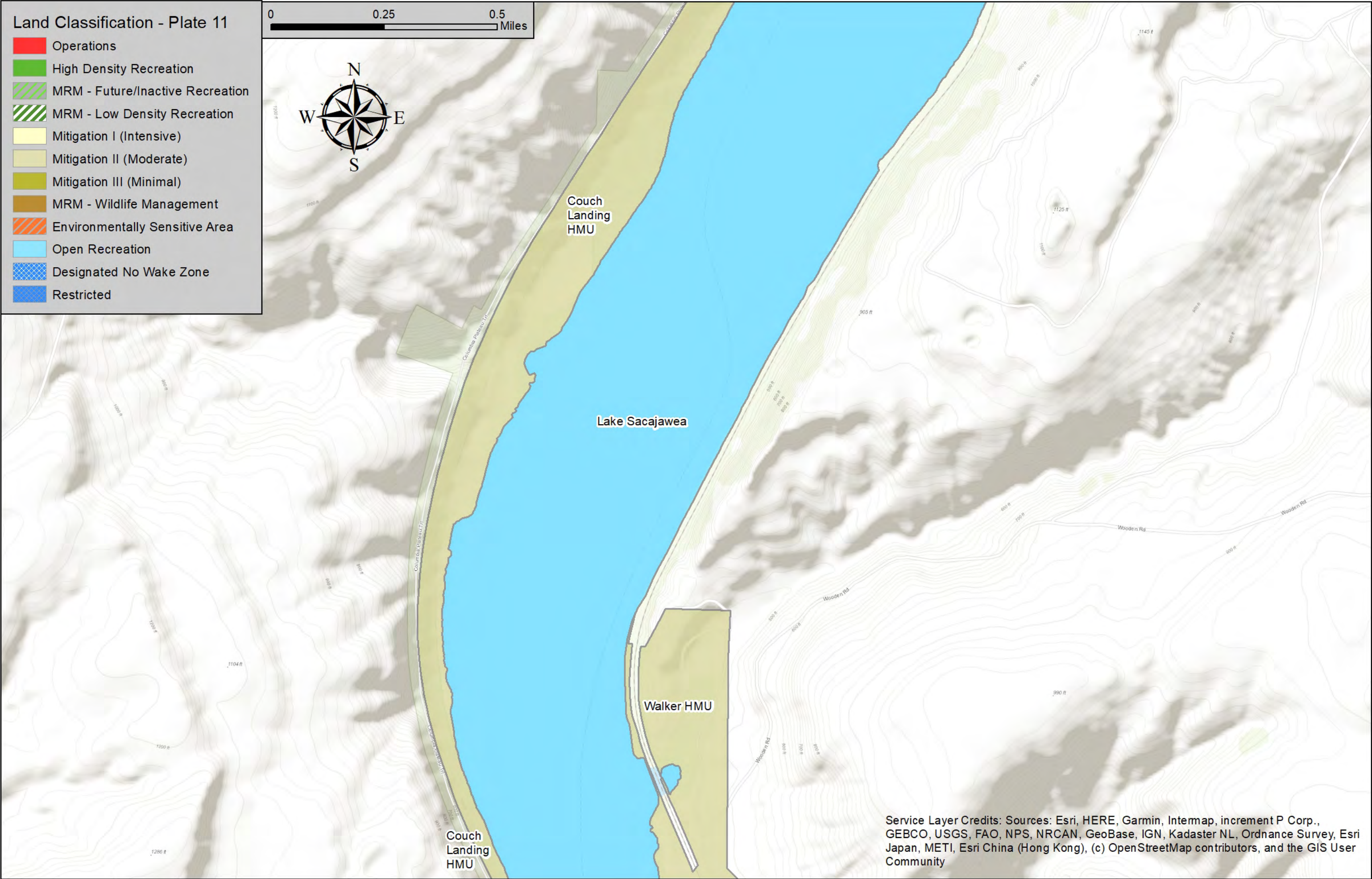


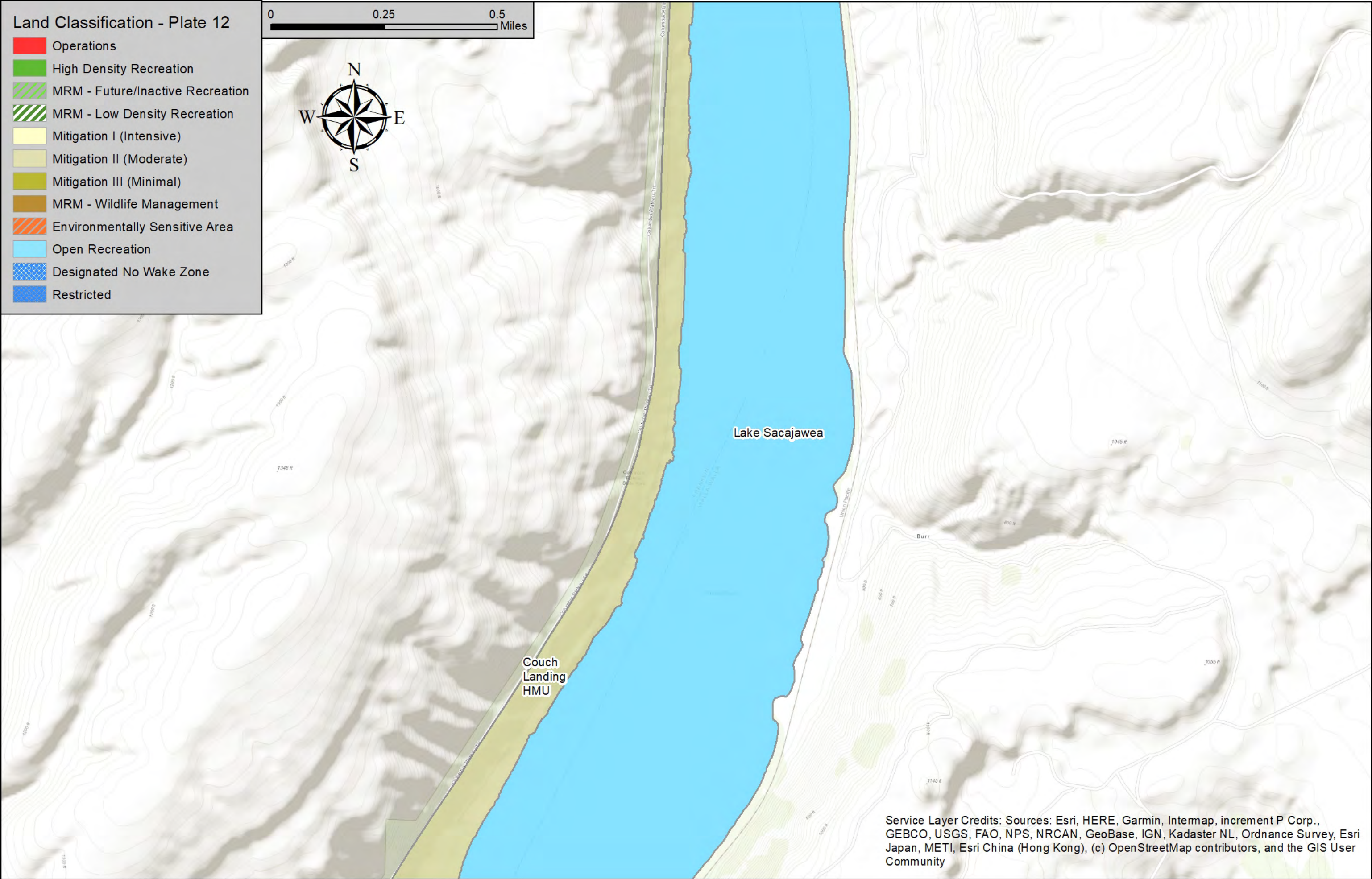


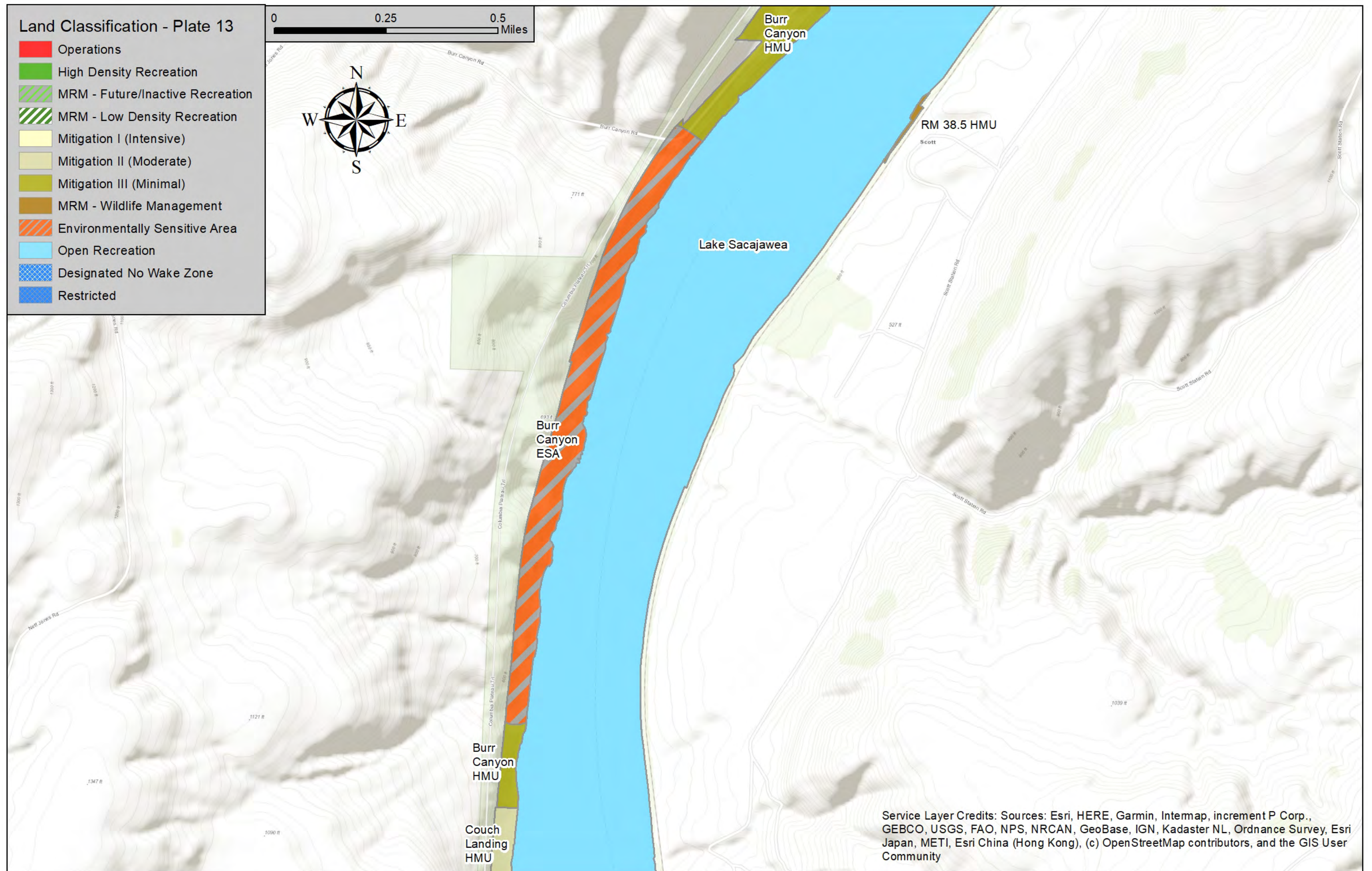


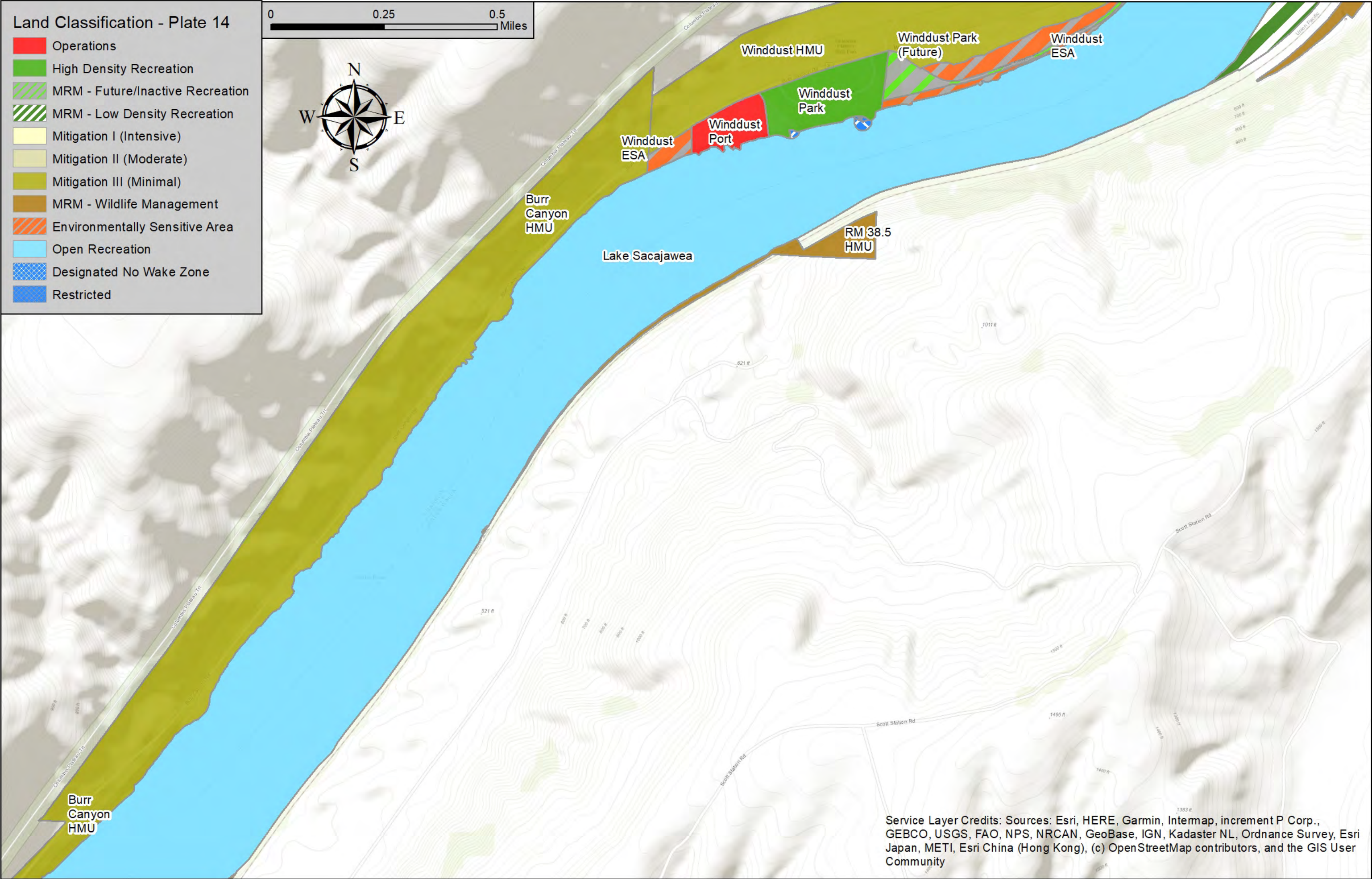


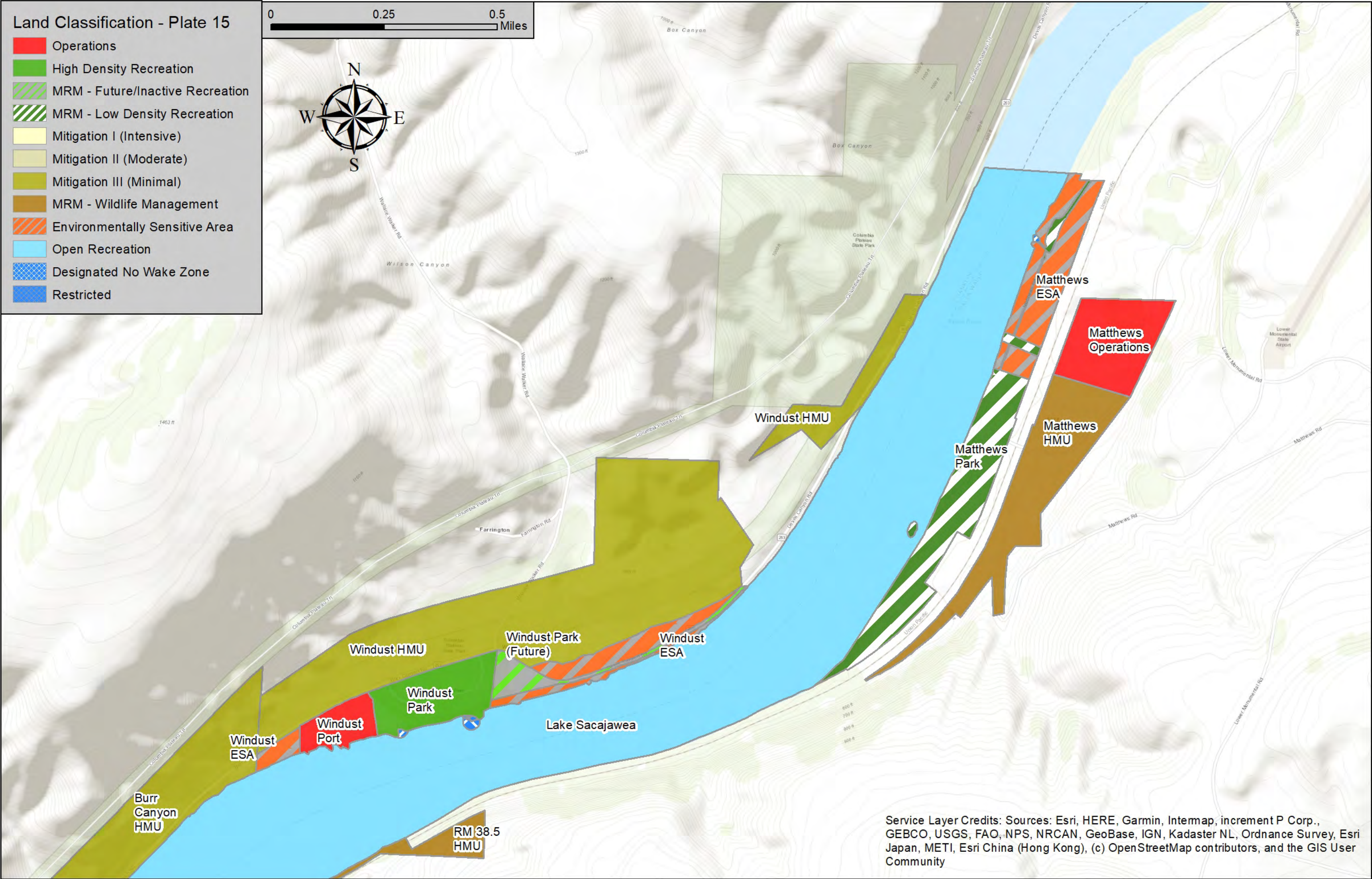






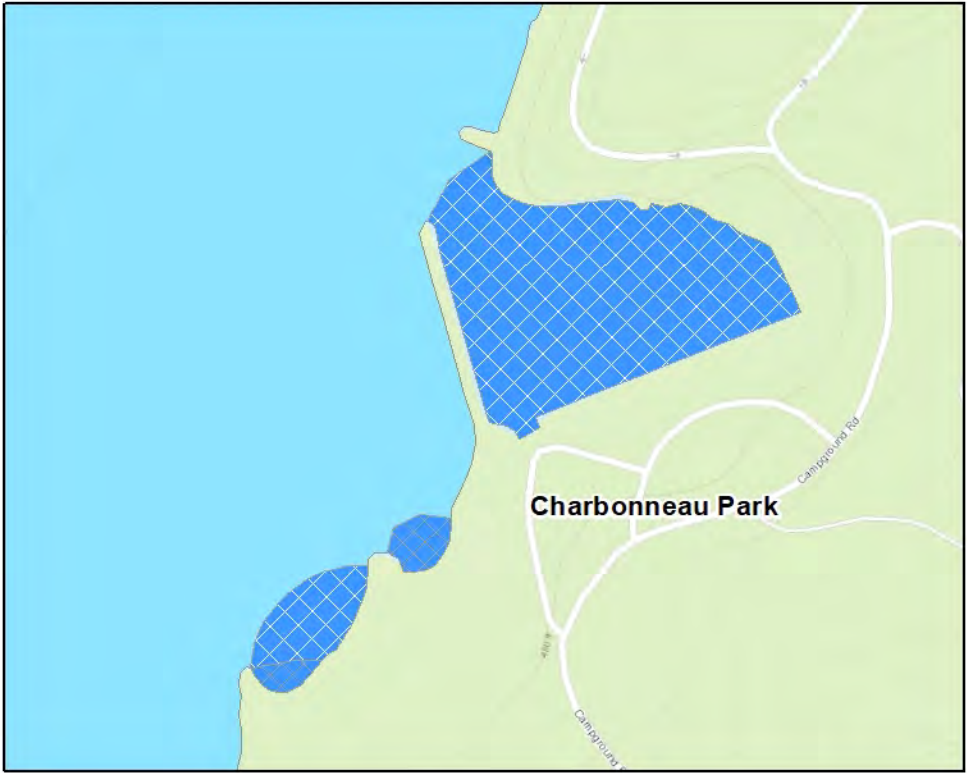






Water Surface Zones - Plate 16

- Open Recreation
- Designated No Wake Zone
- Restricted



Service Layer Credits: Sources: Esri, HERE, Garmin, Intermap, increment P Corp.,

APPENDIX E – ICE HARBOR LOCK AND DAM LIST OF DESIGN MEMORANDA

Table E-1. Ice Harbor Design Memoranda

| No. | Cover Title | Cover Date |
|------|--|---|
| 1 | General Plan and Detailed Cost Estimate Supplement No. 1, Appendixes | October 31, 1952 August 5, 1955 |
| 2 | First-Step Cofferdam and Access Facilities | January 23, 1956 |
| 3 | Powerhouse and Fish Pumping Plant (2 volumes) | February 1, 1956 |
| 5 | South Shore Construction Non-Overflow and Spillway Dam | September 19, 1956 |
| 6 | Concrete Aggregate Investigation | July 20, 1956 |
| 7 | Relocation of Spokane, Portland, and Seattle Railway | September 19, 1956 |
| 8 | Real Estate Memorandum Part I, Construction Area and Access Roads, Segment "A" Part II, Flowage Area Supplement No. 1 to Part II, Access to Public Use Area, Segment "B" | August 17, 1955 November 5, 1957 June 1, 1961 |
| 9 | Downstream Gaging Station | June 1960 |
| 10 | Resident Engineer Office Building | June 26, 1956 |
| 11 | Water Supply | July 25, 1956 |
| 12 | Second Step Cofferdam | June 10, 1958 |
| 13 | Navigation Facilities and North Non-Overflow Dam | November 24, 1958 |
| 13.1 | Navigation Approach Channels | January 22, 1960 |
| 14 | Right Abutment Embankment | November 24, 1958 |
| 15 | Buildings, Landscaping, and Grounds Development | February 27, 1958 |
| 16 | Embankment Protection of Spokane, Portland, and Seattle Railway | February 28, 1958 |
| 17.1 | Relocation Union Pacific Railroad, Part I | October 8, 1958 |
| 17.2 | Relocation Union Pacific Railroad, Part II Supplement No. 1, Relocation Realignment | March 10, 1959 September 22, 1969 |
| 18 | Embankment Protection, Northern Pacific Railway | July 9, 1959 |
| 20 | Permanent Warehouse | April 22, 1958 |
| 21 | Remote Operation of Spillway Gates | November 18, 1958 |

APPENDIX E – ICE HARBOR LOCK AND DAM LIST OF DESIGN MEMORANDA

| No. | Cover Title | Cover Date |
|------|---|--|
| 22B | Public Use and Access Facilities Supplement No. 1 Supplement No. 2, Parts A & B | May 22, 1961 March 19, 1962 March 19, 1962 |
| 23 | Foundation Grouting and Drainage | October 22, 1957 |
| 24 | Reservoir Clearing | July 31, 1959 |
| 25 | Master Plan for the Management of All Natural and Manmade Resources of Ice Harbor Lock and Dam Appendix A, Project Resources Management Plan Appendix B, Fish and Wildlife Management Plan Appendix C, Fire Protection Plan Appendix D, Safety Plan | April 1977 May 1982 |
| 25B | The Master Plan for Development and Management of Lake Sacajawea Appendix 1, Cost Estimates | September 3, 1963 |
| 25.1 | Charbonneau Park | April 24, 1967 |
| 26 | Debris Disposal Facilities | May 19, 1961 |
| 27 | Navigation Lock Upstream Floating Guide Wall | November 20, 1960 |
| 28 | Cost Allocation Studies | June 21, 1961 |
| 29 | Remote Control of Lower Snake River Project Supplement No. 1, Microwave Communications Supplement No. 2, Communications System | September 21, 1961 October 23, 1962 March 24, 1964 |
| 30 | Navigation Lock Fire Protection | May 23, 1962 |
| 31 | Power Plan Units 4-6 | March 1968 |
| 32 | Permanent Juvenile Fish Facilities | December 1990 |
| 33 | Navigation Lock Downstream Gate Replacement | February 1995 |
| 34 | Spillway Deflectors | September 1996 |

APPENDIX E – ICE HARBOR LOCK AND DAM LIST OF DESIGN MEMORANDA

Table E-2. Lower Snake River Fish and Wildlife Compensation Plan Design Memoranda

| Title* | Date |
|--|--------------|
| Design Memorandum for Wildlife Habitat Development on Project Lands, Lower Snake River Project | January 1975 |
| Special Report – Lower Snake River Fish and Wildlife Compensation Plan, Snake River, Washington and Idaho | June 1975 |
| Design Memorandum for Wildlife Habitat Development, Supplement 1, Lower Snake River Project | April 1979 |
| Special Report for Congress, Lower Snake River Fish and Wildlife Compensation Plan | March 1983 |
| Design Memorandum No. 20 - Game Bird Farm Alternative, Habitat Development | April 1986 |
| Special Report – Wildlife Habitat Compensation Evaluation for the Lower Snake River Project | June 1991 |
| Interim Report, Supplement to Special Report, Lower Snake River Fish and Wildlife Compensation Plan, Lower Snake River, Washington and Idaho | April 1996 |

*All of the documents listed in this table are either unnumbered Design Memoranda or special reports, except for Design Memorandum No. 20.