

McNARY MASTER PLAN REVISION

Public Meetings
Kennewick, WA – May 10, 2022
Umatilla, OR – May 11, 2022

Greg Watson
Tri-Rivers Natural Resources Manager

Leigh Cranmer
Master Planner



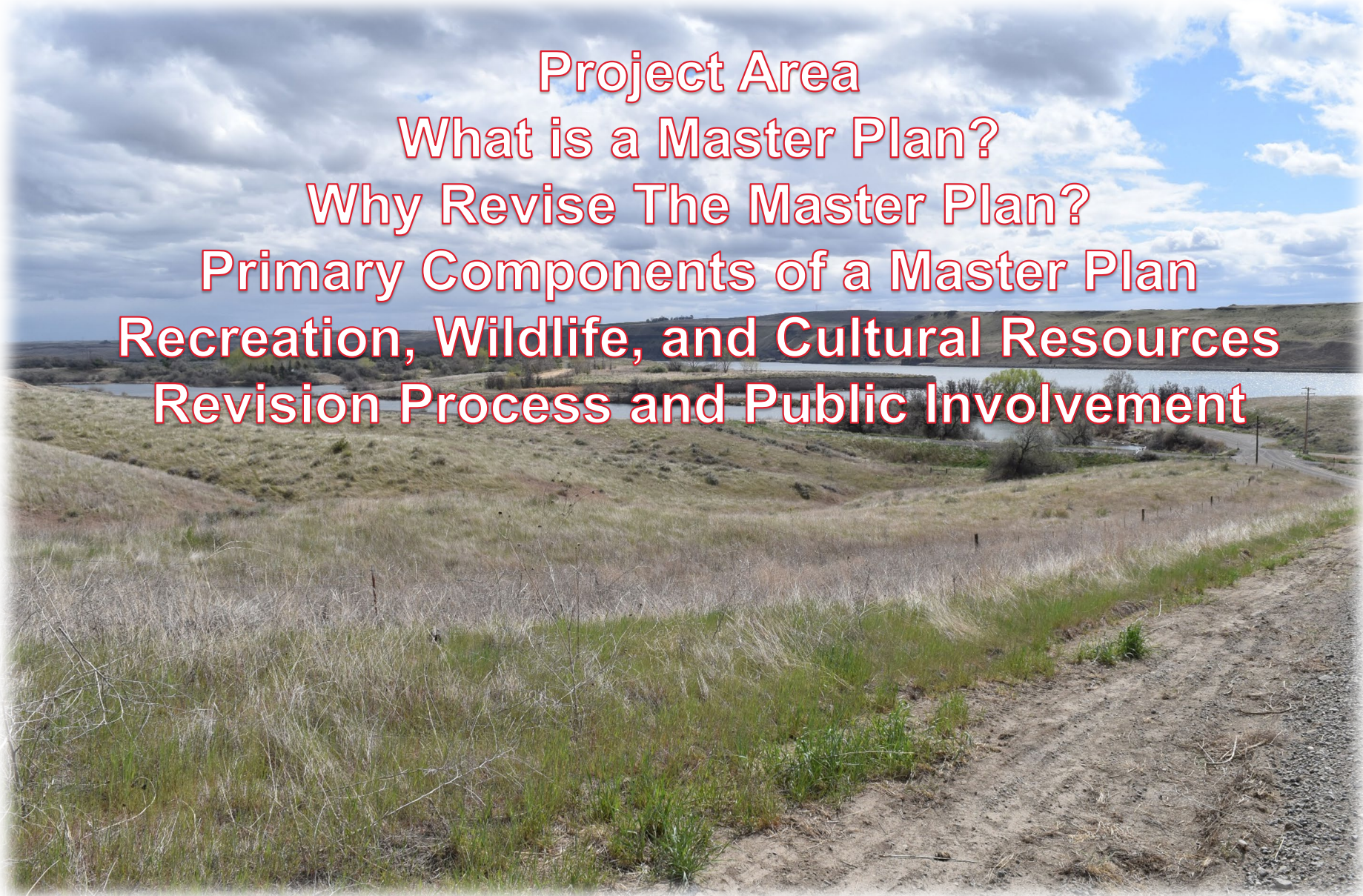
US Army Corps
of Engineers®





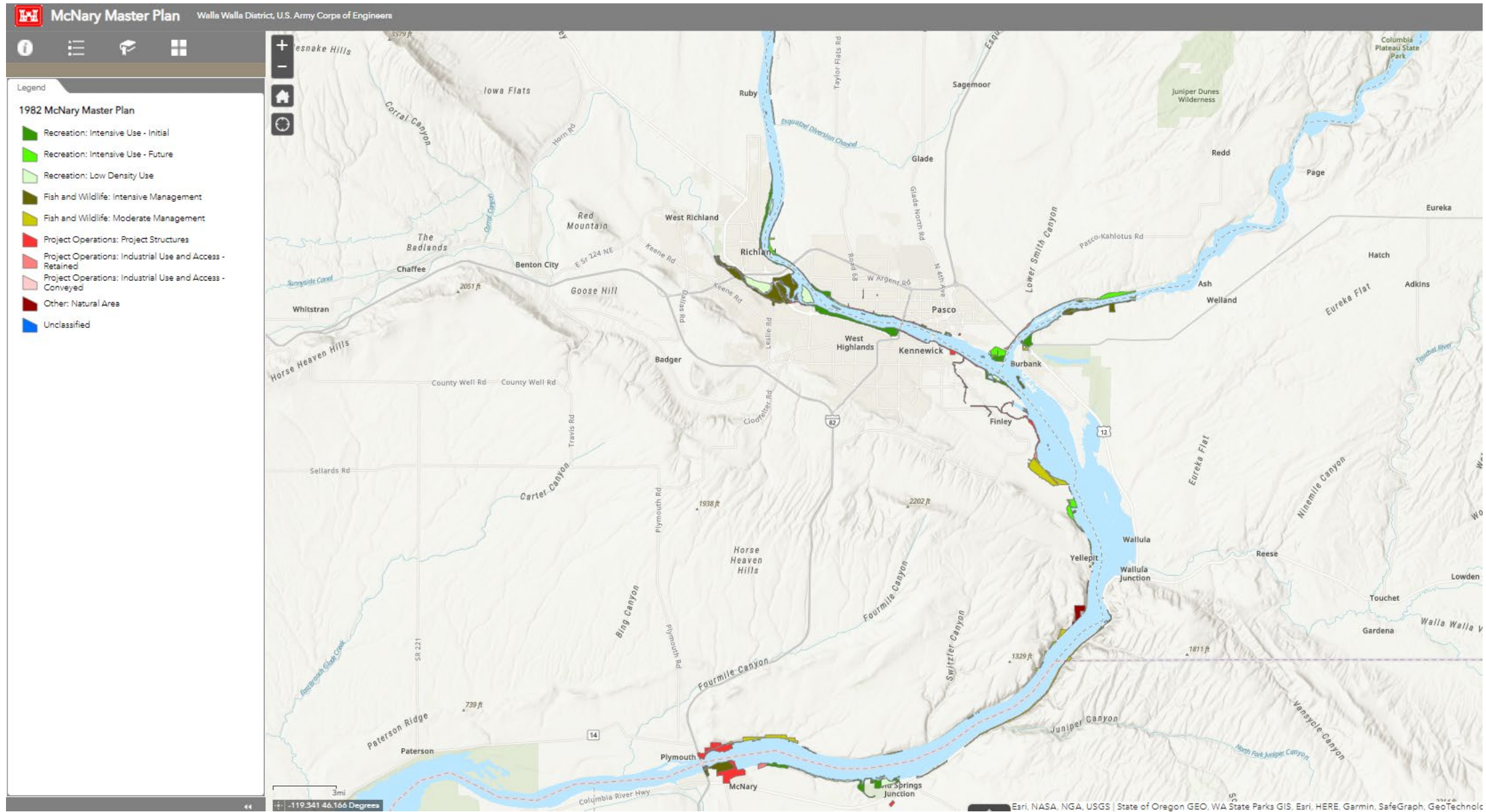
AGENDA

Project Area
What is a Master Plan?
Why Revise The Master Plan?
Primary Components of a Master Plan
Recreation, Wildlife, and Cultural Resources
Revision Process and Public Involvement





McNARY PROJECT AREA MAP





WHAT IS A MASTER PLAN?



- A high-level document that guides how the Corps manages the lands in McNary Project.
- Focus is stewardship of natural and cultural resources and provision of high-quality outdoor recreation facilities and opportunities.
- Master Plan should last roughly 20 years.



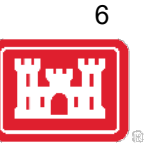
WHAT DOES A MASTER PLAN *NOT* COVER?

- Hydropower operations
 - Spill
 - Fish passage
 - Dam breaching
- Navigation
- Flood risk management
- Economic development
- Details of design or administration of the lands
- Shoreline management plans (MSMP)





WHY REVISE THE MASTER PLAN FOR McNARY?



- Former Master Plan was completed in 1982, and it has exceeded its useful life.
- The 1982 Master Plan focused on more intensive land uses like recreation and project operations.
- 1982 land classifications don't meet current Corps regulations.
- National Environmental Policy Act (NEPA) requirements have changed, and now require an Environmental Assessment to be completed.
- Sustainably manage resources for future generations.



WHAT MAJOR CHANGES ARE NEEDED?

- Discuss what has happened in McNary since 1982
- Prepare new resource objectives based on resource inventories and assessments
- Reclassify all Project lands
- Catalog all land management units with descriptions and photos
- Discuss current challenges such as invasive species control, encroachments, and budgeting impacts on Corps missions



PRIMARY COMPONENTS OF A MASTER PLAN



Resource Objectives – Clearly written statements that set forth measurable and attainable current and future management and development activities that support the goals of the Master Plan.

Land Classifications – The primary use for which the project lands are managed. Lands are zoned for development and resource management consistent with authorized project purposes.





LAND CLASSIFICATIONS



Current (Old) Land Classifications	Proposed New Land Classifications
Project Operations <ul style="list-style-type: none">• Project Structures• Port Terminal• Industrial Use and Access	Project Operations
Recreation: Intensive Use - Initial	High Density Recreation
----- Recreation: Low Density Use Recreation: Intensive Use - Future Wildlife Management: Intensive Wildlife Management: Moderate	Multiple Resource Management <ul style="list-style-type: none">• Low Density Recreation• Future and Inactive Recreation Areas• Wildlife Management
Natural Area	Environmentally Sensitive Area
-----	Mitigation
Not Classified	-----



WHAT MAY CHANGE?



- Total acreage changes
- Shifting acreage – from more intensive uses to less intensive uses
- Shifting priorities – intensive management to sustainable management

Truly balance management of recreational, natural, and cultural resources for greatest benefit to all.



RECREATION GOALS



- **More sustainable management**
 - Landscapes less dependent on irrigation
 - Accommodate modern recreational vehicles
 - Achieve Corps missions with shrinking budgets
- **Keep people safe and provide universal access to wide-ranging recreational opportunities**





WILDLIFE GOALS

- **More sustainable management**
 - **Landscapes less dependent on irrigation**
 - **Achieve Corps missions with shrinking budgets**
- **Enhance regional ecosystems through increase in sustainable native habitat acreage**
- **Meet mitigation requirements**
- **Provide primitive outdoor recreation and wildlife-related opportunities to the public**
- **Invasive species control**



CULTURAL GOALS

- Increase sustainable native habitat acreage and use of native species
- Landscapes less dependent on irrigation
- Meet responsibilities to protect cultural resources on Corps lands
- Engage in meaningful coordination with Tribes





REVISION PROCESS AND TIMELINE



How can you help:

- Please, provide your comments on how you would like to see the natural, cultural, and recreational resources at McNary managed in the future.
- Public input will be collected through these means:
 - >At this meeting
 - >USPS or email
 - >Master Plan website

What happens with your input?

- Comment period is open May 2 – June 2, 2022.
- Corps will consider all comments regarding the McNary Master Plan.



QUESTIONS AND COMMENTS



U.S. POSTAL SERVICE:
U.S. Army Corps of Engineers
Walla Walla District
ATTN: McNary Master Plan
201 N 3rd Ave
Walla Walla, WA 99362-1876

EMAIL:
McNaryMP@usace.army.mil

WEBSITE:
www.nww.usace.army.mil

Click on **McNary Master Plan** under **Locations > District Locks and Dams**



McNARY PROJECT AREA MAP

