

YAKIMA RIVER DELTA ECOSYSTEM RESTORATION FEASIBILITY STUDY

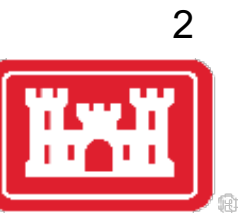
Continuing Authority Program, Section 1135
Public Open House

February 23, 2023

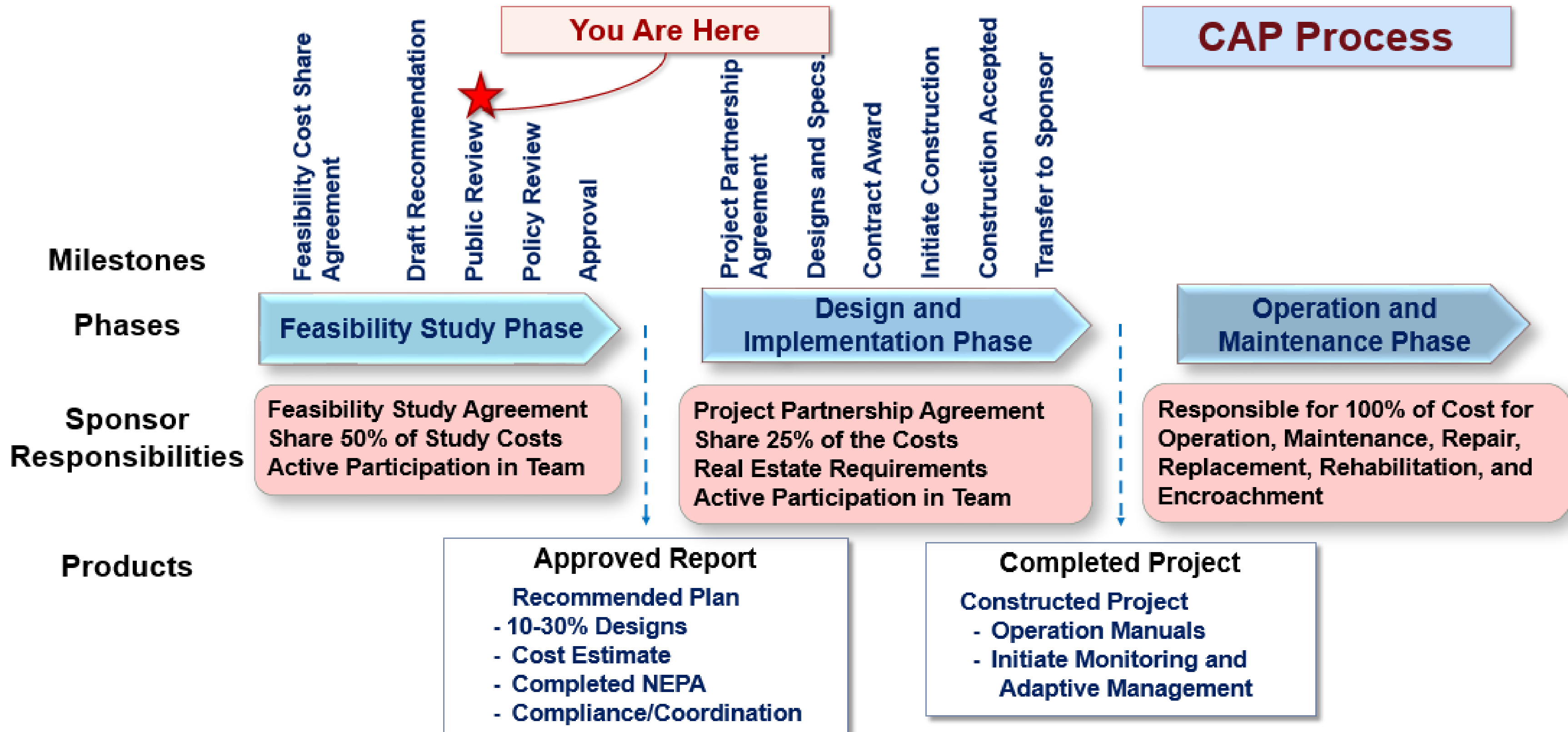
Walla Walla District



US Army Corps
of Engineers®

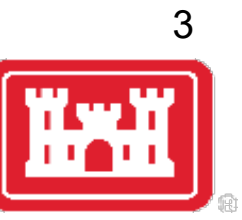


CONTINUING AUTHORITIES PROGRAM (CAP)





USACE PLANNING AND NATIONAL ENVIRONMENTAL POLICY ACT (NEPA)



Plan Formulation Step	NEPA Compliance
■ Scope for Project	■ Scope for NEPA
■ Specify Problems & Opportunities, Objectives & Constraints	■ Describe Purpose & Need consistent with project scope
■ Inventory and Forecast Conditions (Future Without)	■ Describe existing conditions, trends, No Action alternative
■ Formulate alternative plans to address Objectives	■ Include reasonable range of alternatives that address Purpose and Need
■ Evaluate effects of alternative plans	■ Evaluate alternatives' effects to resources.
■ Compare alternative plans	■ Compare alternatives to No Action, ID the Environmental Alternative
■ Select a Tentative Selected Plan	■ Identify the Agency Preferred Plan
■ Release for Public Review	■ Release for Public Review



Figure 2.2: USACE Risk-Informed Planning process



SPONSORS/PARTNERS/STAKEHOLDERS



Non-Federal Sponsor (WDFW) and 3rd Party (MCF):



Cooperating Agencies:

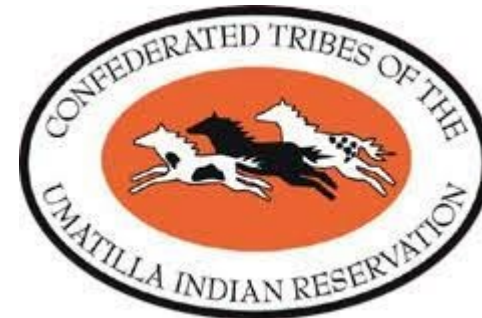


Photo credit: Yakama Nation

Stakeholders:



Yakima River Basin Watershed Enhancement Workgroup



CONTINUING AUTHORITIES PROGRAM (CAP)

CAP Environmental Improvement (Section 1135)

- Total federal funding limit per project = \$10 Million
- Cost Share*
 - Feasibility Study - Federal / Sponsor Percentages = 50% / 50%
 - Design and Construction - Federal / Sponsor Percentages = 75% / 25%

Cost Share Portions of Total Project Costs

- At \$12.9 Million Total Project Costs
 - Federal Funding = \$9.7 Million
 - Sponsor Matching Cost Share = \$3.2 Million*

* *Cash or Credit for Work In Kind*





YAKIMA RIVER DELTA FEASIBILITY STUDY

Objectives and Constraints

50-Year
Planning
Horizon

Planning Study Objectives

1. Restore the aquatic ecosystem function and processes within the mouth of the Yakima River Delta that have been degraded by delta alterations which resulted in a thermal barrier between the Columbia River and Yakima River.
2. Improve the quality and complexity of aquatic and riparian habitat within the Yakima River Delta by increasing flows, reducing predator habitat, and providing native plant diversity.



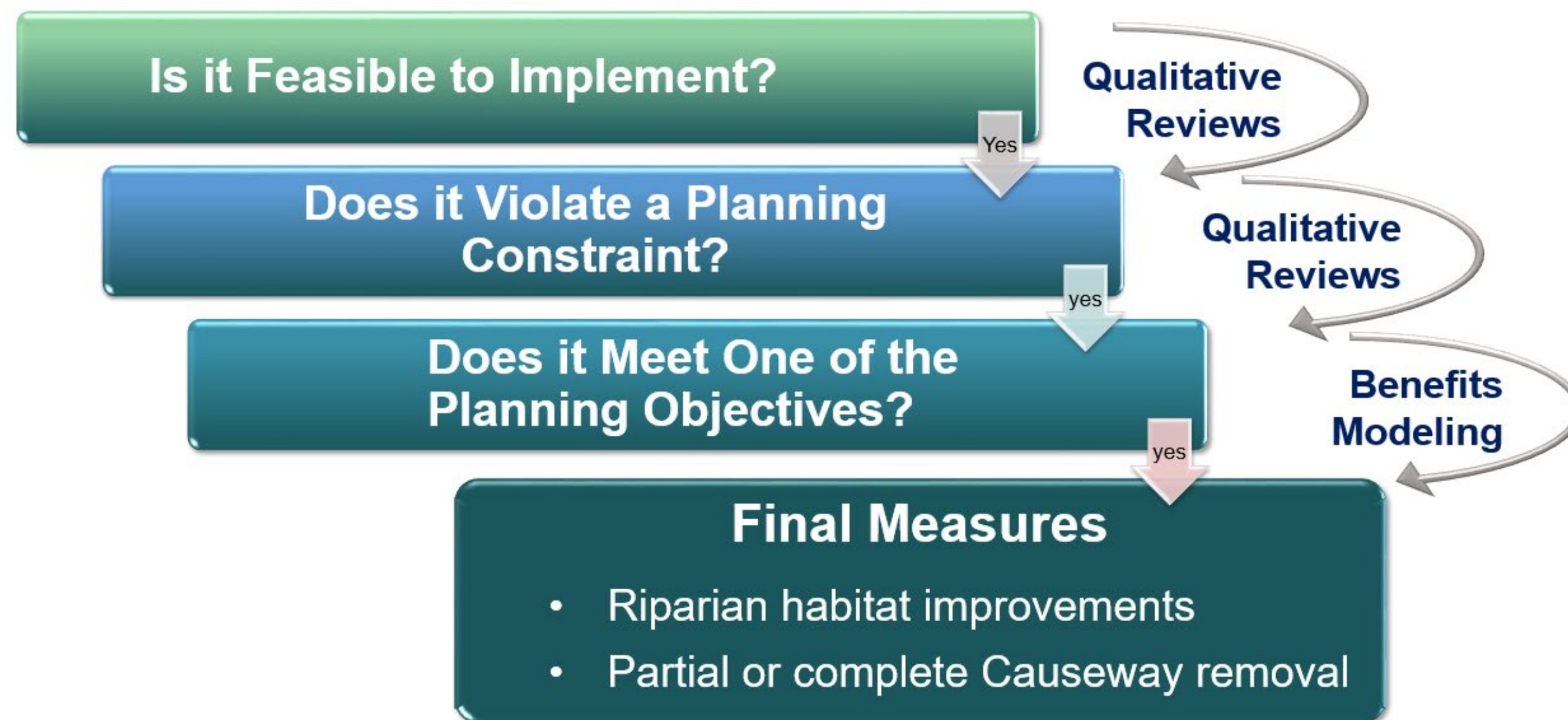
Planning Study Constraints

1. Coldwater refugia and springs will not be impacted by alternatives.
2. No alternative shall directly impact areas of known human interment or cemeteries.
3. Project will not impact authorized project purposes.
4. Project will not increase anticipated predation of listed species.



YAKIMA RIVER DELTA FEASIBILITY STUDY

Plan Formulation Strategy - Measures



Measures

- 14 brainstormed initial measures
- 4 violated a study constraint
 - 8 did not meet a Planning Objective or were not technically feasible.
 - 2 were retained for scaling and further analysis

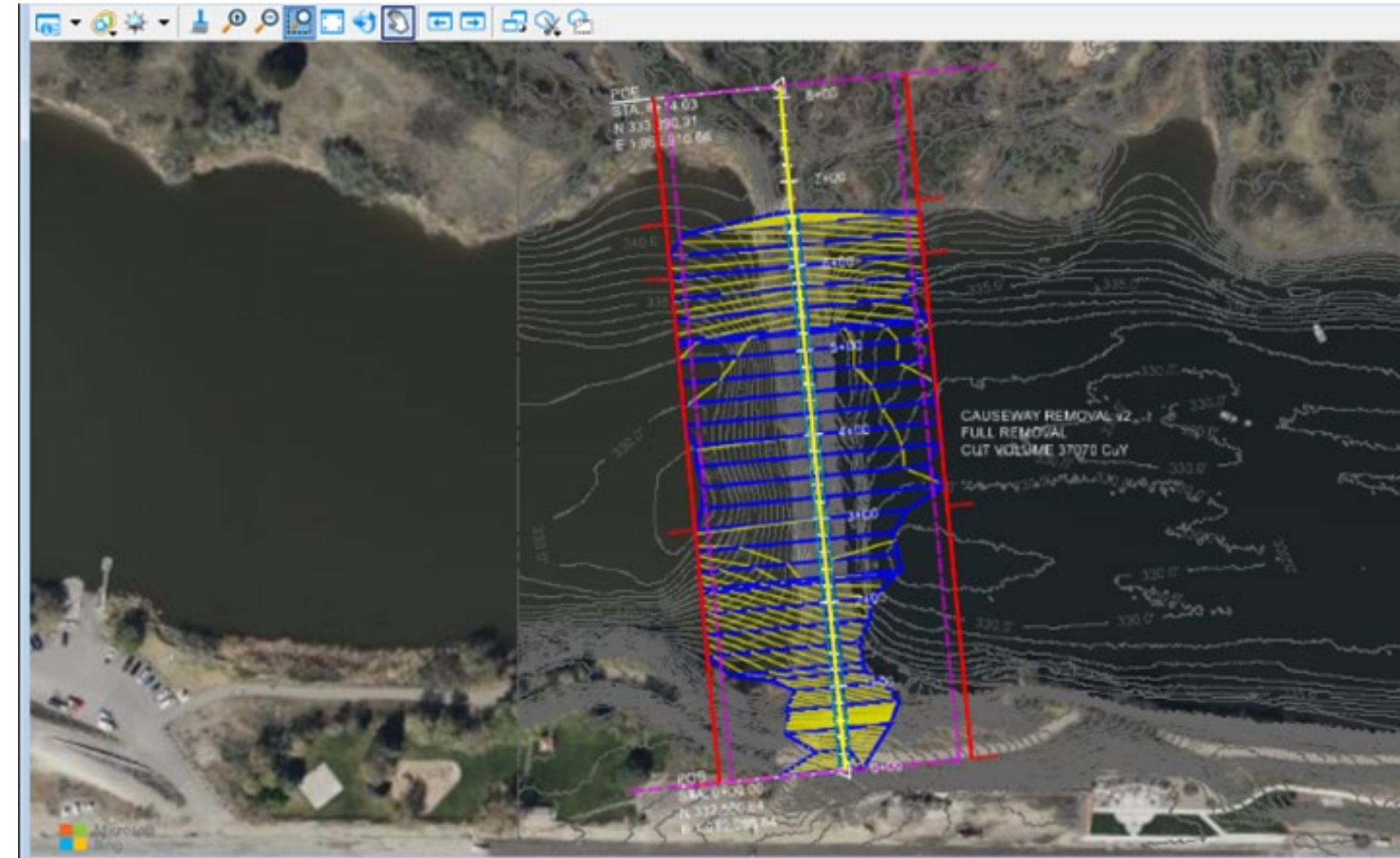


YAKIMA RIVER DELTA FEASIBILITY STUDY



Selection of Tentatively Selected Plan (TSP)

- Full Removal Without Riparian Restoration.
- Avoidance of Bateman Island.
- Approximately 37K CY of material excavated.
- Disposal site needs to be identified and finalized.
- Rip-rap is not included in costs or design at this time.
- Construction will be limited to winter to minimize impacts to listed salmonids.
- Plans and Specs will further define construction details.
- Monitoring and Adaptive Management Plan included.





Yakima Delta: Section 1135 - Ecosystem Restoration Project

Project Features



- Impacted USACE Tracts
 - Yakima Delta 1135 Estimated Causeway Removal Area (3.55 ac.)
 - Yakima Delta 1135 Staging & Access (0.377 ac.)
 - Yakima Delta 1135 Access & Haul Route (0.206 ac.)
- Scale 1:2,000

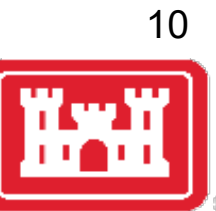
Project - McNary Lock and Dam, County - Benton, WA
 Sections - 19, 30 Township - 9N Range - 29E
 Approximate Project Acreage: +/- 3.92 ac

MAP ID: YD1135_ProjectFeatures
 DATE: 2/6/2023

DISCLAIMER
 This product was produced from geospatial information by the U.S. Army Corps of Engineers. Geospatial data and products may be developed from sources of differing accuracy, accurate only at certain scales, based on modeling or interpretation, incomplete while being created or revised, etc. Using this product for purposes other than those for which it was intended may yield inaccurate or misleading results. The U.S. Army Corps of Engineers assumes no liability for correctness or accuracy, and reserves the right to correct, update, or modify geospatial data and/or products without notification.



HOW TO SUBMIT COMMENTS:



U.S. Army Corps of Engineers
ATTN: PPL-C (Yakima River Delta)
201 N. 3rd Ave.
Walla Walla, WA 99362

Email: NEPANWW@usace.army.mil
“Yakima River Delta” in the subject line

Comment Submission Website:
<http://www.nww.usace.army.mil/EnvironmentalComplianceComment/>



***Comment Submission Period:
January 30 – March 10, 2023***



QUESTIONS AND ANSWERS



Visit the following websites for more information:

US Army Corps of Engineers:

<https://www.nww.usace.army.mil/missions/projects/yakima-river-delta-ecological-restoration/>

<https://www.nww.usace.army.mil/Missions/Environmental-Compliance/>

Mid-Columbia Fisheries:

<https://midcolumbiafisheries.org/restoration/lower-yakima-river/yakima-delta-assessment/>

<https://www.facebook.com/profile.php?id=100064690931185>