

Note:
 SOUNDINGS ARE IN FEET AND TENTHS AND SHOW DEPTHS AT STOPPED
 LOW WATER (FLOOD 100 ON U.S. WEATHER BUREAU GAGE AT BUREAU,
 EL. 512.05 M.S.L.)
 FLOODS IN PARENTHESIS (PLUS 13.7) SHOW HEIGHT ABOVE LOW WATER.
 ELEVATIONS ARE REFERRED TO MEAN SEA LEVEL 1955.0. ALL IN FEET UNLESS
 OTHERWISE NOTED.
 CONTOUR INTERVAL 5 FEET.
 6 FOOT DEPTH WATER SHOWN THUS: ---
 5 FOOT DEPTH WATER SHOWN THUS: ---
 CENTER LINE OF PROPOSED CHANNEL SHOWN THUS: ---
 DISTANCE IN MILES FROM MOUTH OF RIVER MEASURED ON CENTER LINE OF
 PROPOSED CHANNEL SHOWN THUS: (52)

**SNAKE RIVER, WASHINGTON - IDAHO
 MOUTH TO OREGON - WASHINGTON LINE
 REVIEW REPORT**

IN 54 SHEETS SCALE 1:2,000 SHEET NO. 48
 U. S. ENGINEER OFFICE, PORTLAND, OREGON, 1934.
 Submitted: *William A. ...* Approved: *Paul ...*
 Associate Engineer Major Corps of Engineers
 Drawn by G.H. ...

SN-1-4/48
 H-9-7/48



NOTE:
 SOUNDSINGS ARE IN FEET AND METERS AND SHOW DEPTHS AT ADOPTED LOW WATER PLANE (100 ON U.S. WEATHER BUREAU GAGE AT BIPARNA, 11 512.00 M. S. L.).
 FIGURES IN PARENTHESES SHOW HEIGHT ABOVE LOW WATER. ELEVATIONS ARE REFERRED TO MEAN SEA LEVEL (1985.000) UNLESS THE ADJUSTMENT.
 COURSE INTERVAL 5 FEET.
 A POST CENTER CURVE SHOWN THIS...
 5 FOOT CENTER CURVE SHOWN THIS...
 CENTER LINE OF PROPOSED CHANNEL SHOWN THIS...
 DISTANCE IN MILES FROM MOUTH OF RIVER MEASURED ON CENTER LINE OF PROPOSED CHANNEL SHOWN THIS: (53)

SNAKE RIVER, WASHINGTON - IDAHO
MOUTH TO OREGON - WASHINGTON LINE
 REVIEW REPORT

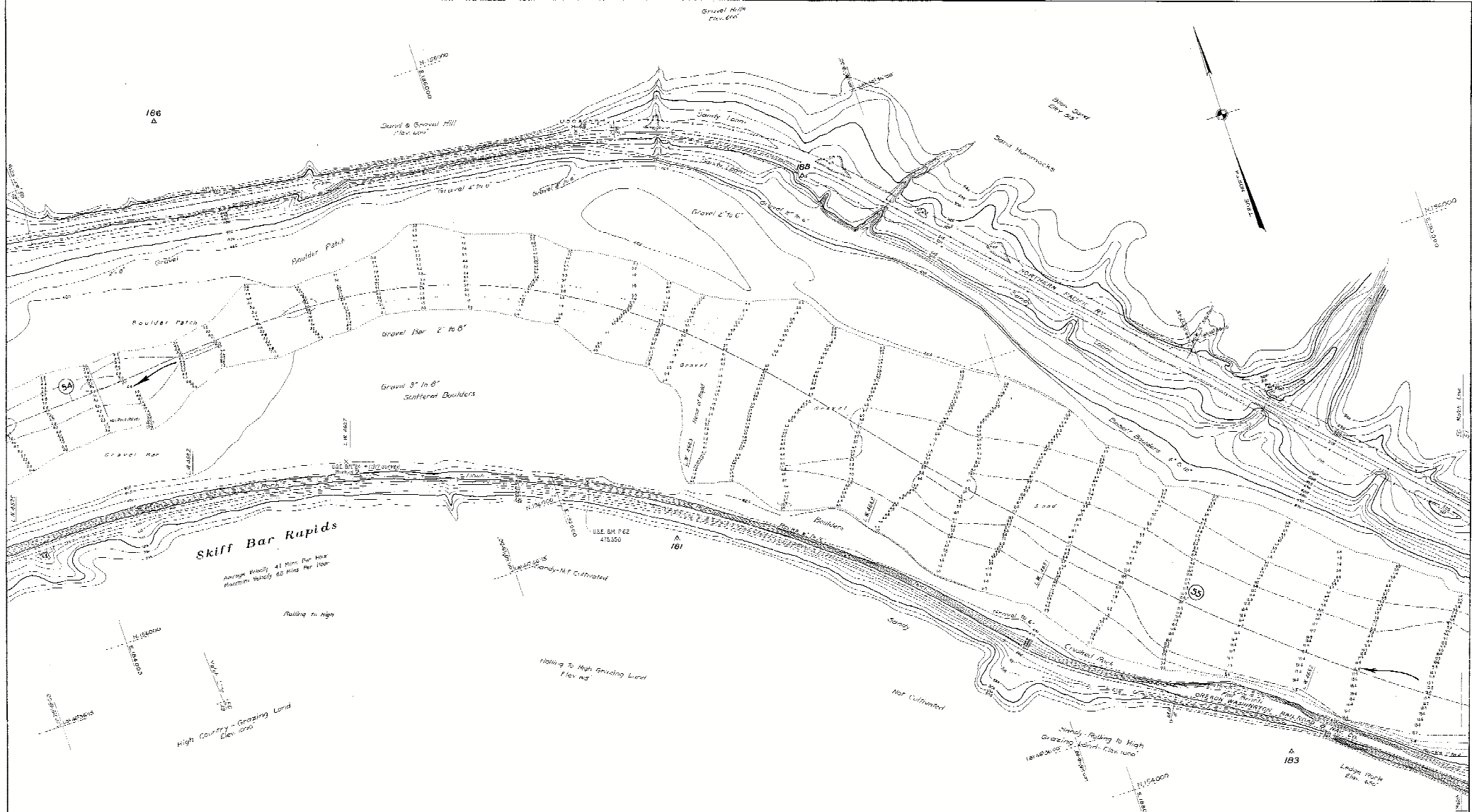
IN 154 SHEETS SCALE 1:20,000 SHEET NO. 49

U. S. ENGINEER OFFICE, PORTLAND, OREGON. 1934.

Submitted: *Allen J. Dan* Approved: *W. J. Williams*
 Associate Engineer Major, Corps of Engineers

Drawn by G.S. RAY Transmitted with report detail stamp 10, 1935.

SN-1-1150
H-9-2749



NOTE:
 SOUNDINGS ARE IN FEET AND TENTHS AND SHOW DEPTHS AT ADOPTED
 LOW WATER PLANE 156.05 ON U.S. WEAVER BUREAU GAGE AT RAPIDS,
 14, 517.05 M.S.L.
 FIGURES IN PARENTHESES SHOW 1.00' SHOW HEIGHT ABOVE LOW WATER.
 ELEVATIONS ARE REFERRED TO MEAN SEA LEVEL (U.S.C.G.S. DATUM 1929
 ADJUSTMENT).
 CONTOUR INTERVAL: 5 FEET
 5 FEET DEPTH CURVE SHOWN THUS: _____
 10 FOOT DEPTH CURVE SHOWN THUS: _____
 CENTER LINE OF THROUGH CHANNEL SHOWN THUS: _____
 DISTANCE IN FEET FROM MOUTH OF RIVER MEASURED ON CENTER LINE OF
 BRIDGES SHOWN THUS: (55)

**SNAKE RIVER, WASHINGTON - IDAHO
 MOUTH TO OREGON - WASHINGTON LINE
 REVIEW REPORT**

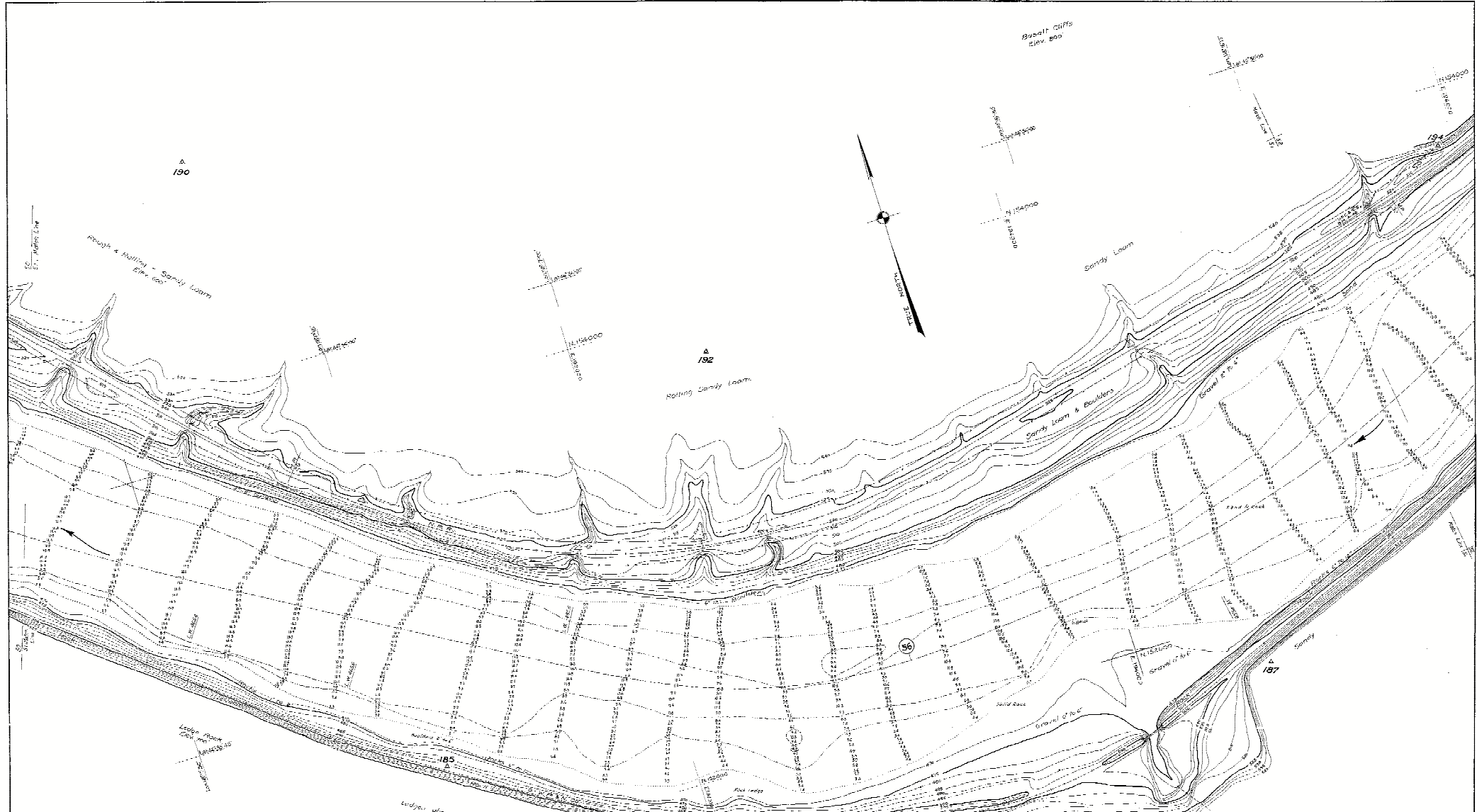
IN 154 SHEETS SCALE: 1:2,000 SHEET NO. 50

U. S. ENGINEER OFFICE PORTLAND, OREGON. 1934.

Submitted: *Allen L. Barr* Approved: *Chas. H. ...*
 Associate Engineer Major, Corps of Engineers

Drawn by: O.S. R.S.Y. Transmitted with report dated: June 10 1935.

SN-1-4/51
11-9-2/50



1:10000
 1:20000
 1:30000
 1:40000
 1:50000
 1:60000
 1:70000
 1:80000
 1:90000
 1:100000
 1:110000
 1:120000
 1:130000
 1:140000
 1:150000
 1:160000
 1:170000
 1:180000
 1:190000
 1:200000
 1:210000
 1:220000
 1:230000
 1:240000
 1:250000
 1:260000
 1:270000
 1:280000
 1:290000
 1:300000
 1:310000
 1:320000
 1:330000
 1:340000
 1:350000
 1:360000
 1:370000
 1:380000
 1:390000
 1:400000
 1:410000
 1:420000
 1:430000
 1:440000
 1:450000
 1:460000
 1:470000
 1:480000
 1:490000
 1:500000
 1:510000
 1:520000
 1:530000
 1:540000
 1:550000
 1:560000
 1:570000
 1:580000
 1:590000
 1:600000
 1:610000
 1:620000
 1:630000
 1:640000
 1:650000
 1:660000
 1:670000
 1:680000
 1:690000
 1:700000
 1:710000
 1:720000
 1:730000
 1:740000
 1:750000
 1:760000
 1:770000
 1:780000
 1:790000
 1:800000
 1:810000
 1:820000
 1:830000
 1:840000
 1:850000
 1:860000
 1:870000
 1:880000
 1:890000
 1:900000
 1:910000
 1:920000
 1:930000
 1:940000
 1:950000
 1:960000
 1:970000
 1:980000
 1:990000
 2:000000

SNAKE RIVER, WASHINGTON - IDAHO
MOUTH TO OREGON - WASHINGTON LINE
 REVIEW REPORT

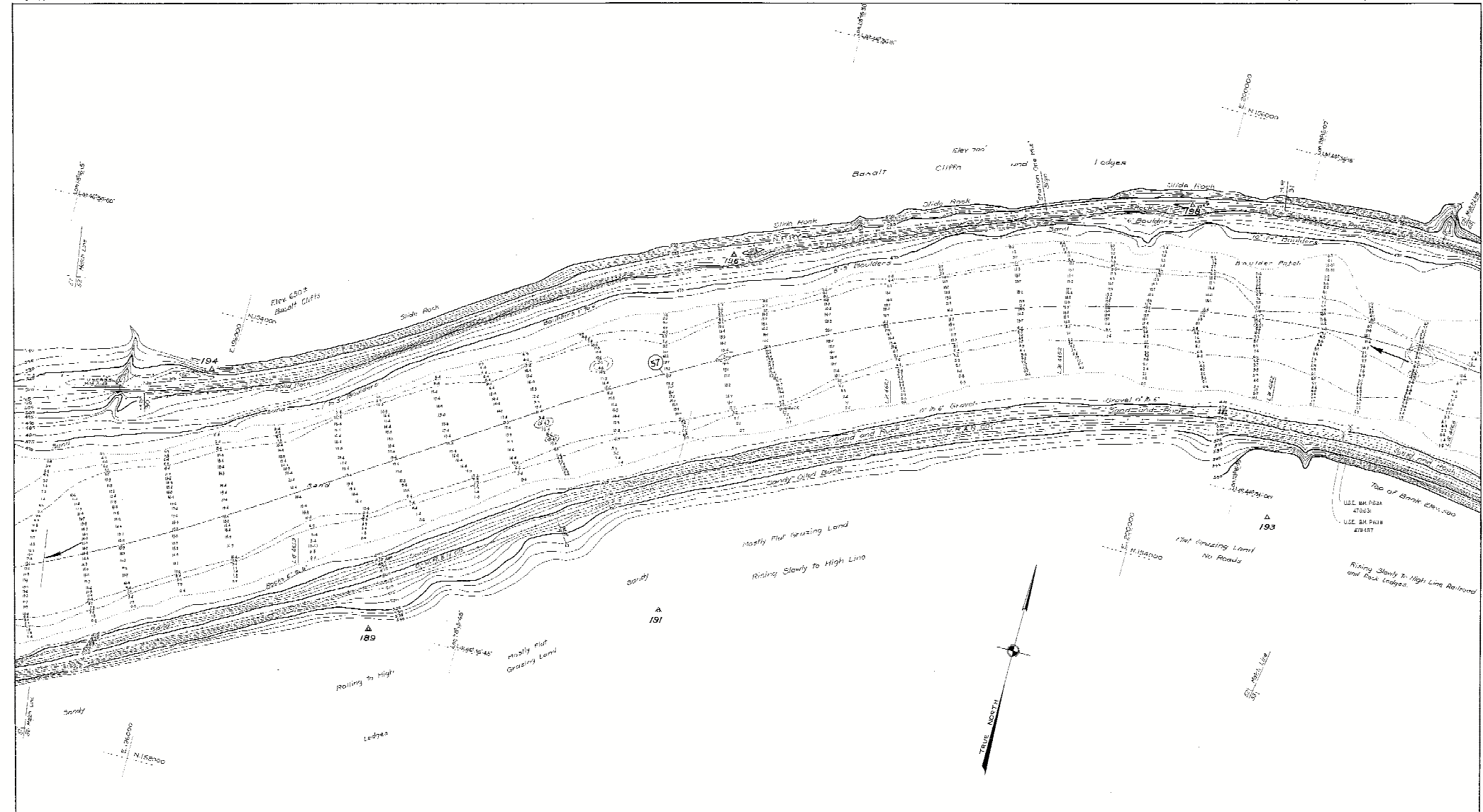
1 IN 5 SHEETS SCALE 1:25,000 SHEET NO. 51

U. S. ENGINEER OFFICE, PORTLAND, OREGON. 1934.

Submitted: *Allen B. Bess* Approved: *W. H. Williams*
 Assistant Engineer Major, Corps of Engineers

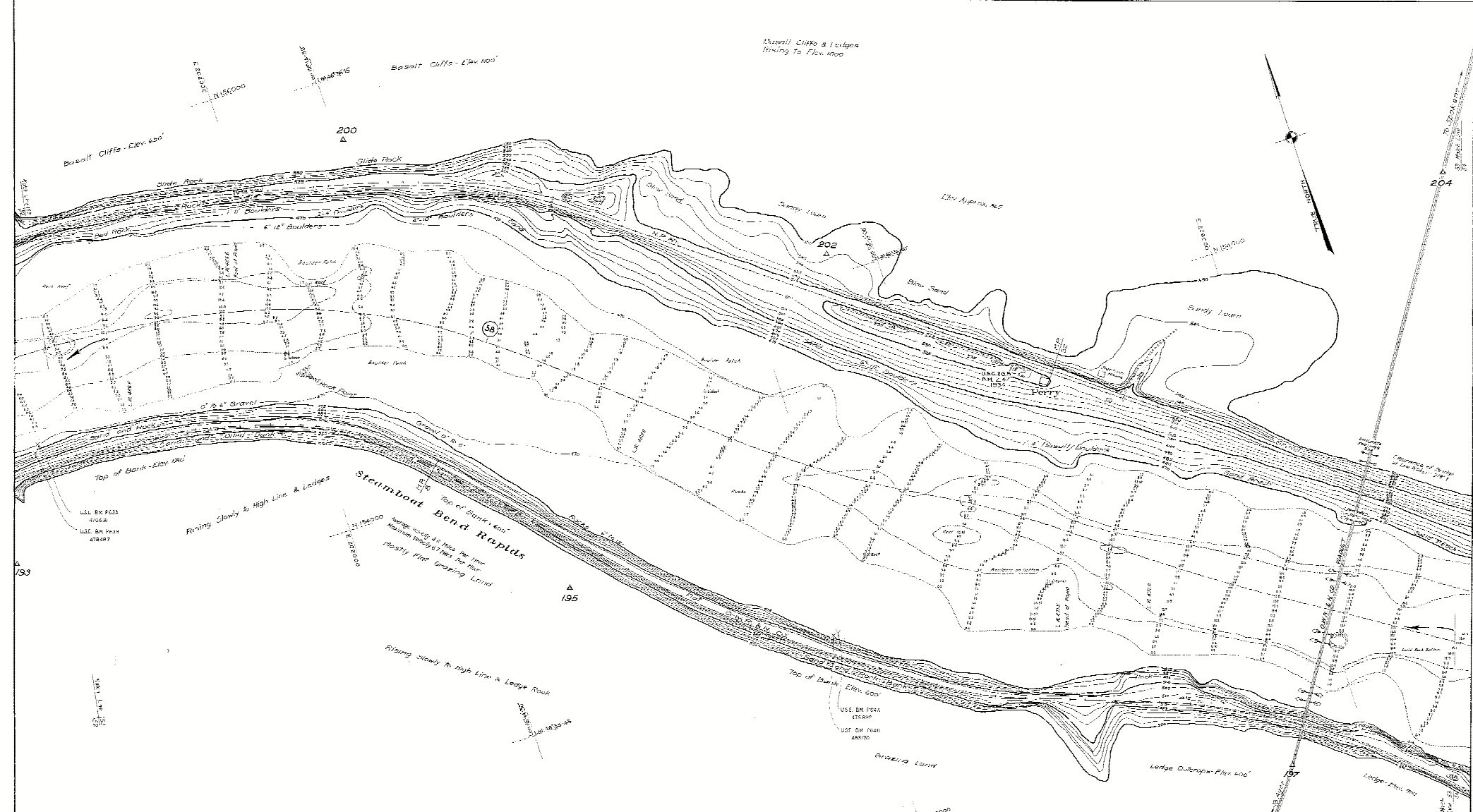
Drawn by: *W. H. Bess* Transmitted with report dated June 10, 1934.

SN-1-4/52
 H-9-2/51



1914
 1915
 1916
 1917
 1918
 1919
 1920
 1921
 1922
 1923
 1924
 1925
 1926
 1927
 1928
 1929
 1930
 1931
 1932
 1933
 1934
 1935
 1936
 1937
 1938
 1939
 1940
 1941
 1942
 1943
 1944
 1945
 1946
 1947
 1948
 1949
 1950
 1951
 1952
 1953
 1954
 1955
 1956
 1957
 1958
 1959
 1960
 1961
 1962
 1963
 1964
 1965
 1966
 1967
 1968
 1969
 1970
 1971
 1972
 1973
 1974
 1975
 1976
 1977
 1978
 1979
 1980
 1981
 1982
 1983
 1984
 1985
 1986
 1987
 1988
 1989
 1990
 1991
 1992
 1993
 1994
 1995
 1996
 1997
 1998
 1999
 2000

Snake River, Washington - Idaho
Mouth to Oregon - Washington Line
 REVIEW REPORT
 IN 45 SHEETS SCALE 1:2,000 SHEET NO. 52
 U. S. ENGINEER OFFICE, PORTLAND, OREGON. 1934.
 Submitted: *William S. Barr* Approved: *W. H. ...*
 Associate Engineer Major, Corps of Engineers
 Drawn by: O. K. ... Transmitted with report dated June 10, 1935



NOTE:
 ELEVATIONS ARE IN FEET AND TENTHS AND SHOW DEPTH AT ADJUSTED LOW WATER PLANE 100 ON U.S. WEATHER BUREAU GAGE AT RIPARIA, 11 1/2 000 M. D. L.
 FLOWERS IN PARALLELS SHOW 12.77 SHOW MILES; ABOVE LOW WATER PLANE ELEVATIONS ARE REFERRED TO MEAN SEA LEVEL - U.S.C.G.S. DATUM 1900 ADJUSTMENT.
 CONTOUR INTERVAL 5 FEET.
 6 FEET TO 10 FEET SHOW THIS ---
 10 FEET TO 20 FEET SHOW THIS ---
 CENTER LINE OF SPURRED CHANNEL SHOWN THIS ---
 DISTANCE IN MILES FROM MOUTH OF RIVER MEASURED ON CENTER LINE OF SPURRED CHANNEL SHOWN THIS (50)

SNAKE RIVER, WASHINGTON - IDAHO MOUTH TO OREGON - WASHINGTON LINE REVIEW REPORT

IN 15 SHEETS SCALE 1:20,000 SHEET NO. 53

U. S. ENGINEER OFFICE, PORTLAND, OREGON, 1934.

Submitted: *Allen R. Datta* Approved: *W. H. Johnson*
 Associate Engineer Major, Corps of Engineers

Drawn by D. S. KEY. Transmitted with report dated June 10, 1935.



199
 SOUNDINGS ARE IN FEET AND TENTHS AND SHOW DEPTHS AT ADAPTED LOW WATER PLANE 100 ON U. S. WEATHER BUREAU GAUGES AT TUPACAN, ID. 4.10 P.M. 22 11 1.
 HEIGHTS IN FEET SIMILAR TO US 1.71 SHOW HEIGHT ABOVE LOW WATER. ELEVATIONS ARE REFERRED TO MEAN SEA LEVEL, U. S. C. & G. S. DATUM 1929 ADJUSTMENT.
 CONTOUR INTERVAL 5 FEET.
 6 FOOT DEPTH CURVE SHOWN THUS:
 9 FOOT DEPTH CURVE SHOWN THUS:
 CENTER LINE OF SHORTEST CHANNEL SHOWN THUS:
 DISTANCE IN FEET FROM WIDTH OF RIVER MEASURED ON CENTER LINE OF SHORTEST CHANNEL SHOWN THUS:
 (56)

Average Velocity 4.8 Feet per Hour
 Maximum Velocity 16.0 Feet per Hour
 Floating Country Cultivated

SNAKE RIVER, WASHINGTON - IDAHO
MOUTH TO OREGON - WASHINGTON LINE
 REVIEW REPORT

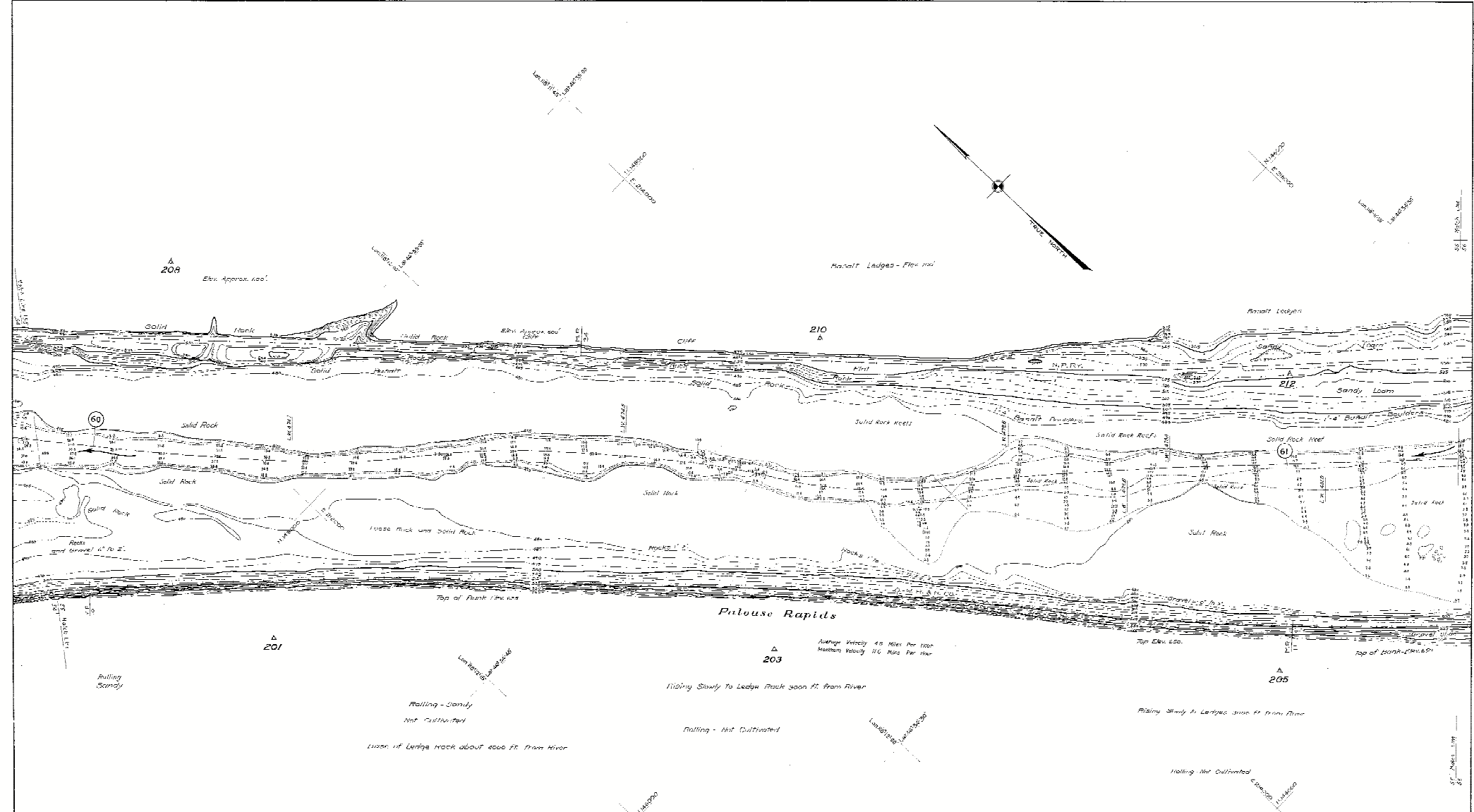
115.4 SHEETS SCALE 1:2,000 SHEET NO. 54

U. S. ENGINEER OFFICE, PORTLAND, OREGON 1934

Submitted: *Edward D. Darr* Approved: *W. J. ...*
 Associate Engineer Main Chief of Traction

Drawn by: H. G. Y. Transmitted with report dated June 10, 1935.

SN-1-4/33
 H-9-2/54



Average Velocity 4.8 Miles Per Hour
 Maximum Velocity 11.0 Miles Per Hour

Rising Slowly To Ledge Rock 3000 Ft. from River

Rising - Not Cultivated

Rising Slowly To Ledges 3000 Ft. from River

Rising Not Cultivated

Note:
 DIMENSIONS ARE IN FEET AND TENTHS AND SHOW DEPTHS AT ADOPTED LOW WATER PLANE FROM U.S. WEATHER BUREAU GAGE AT RICHMOND, ID. 512 P.M. M.S.L.
 FIGURES IN PARENTHESES SHOW 4.77 FEET HIGH ABOVE LOW WATER. ELEVATIONS ARE REFERRED TO MEAN SEA LEVEL; U.S.C.G.S. DATUM 1929 ADJUSTMENT.
 CHANNEL INTERVAL 5 FEET
 5 FOOT DEPTH CURVE SHOWN THUS
 1 FOOT DEPTH CURVE SHOWN THUS
 CENTER LINE OF PROPOSED CHANNEL, SHOWN THUS
 CHANNEL IN WIDE FROM MOUTH OF RIVER MEASURED ON CENTER LINE OF PROPOSED CHANNEL SHOWN THUS (6)

SNAKE RIVER, WASHINGTON - IDAHO MOUTH TO OREGON - WASHINGTON LINE REVIEW REPORT

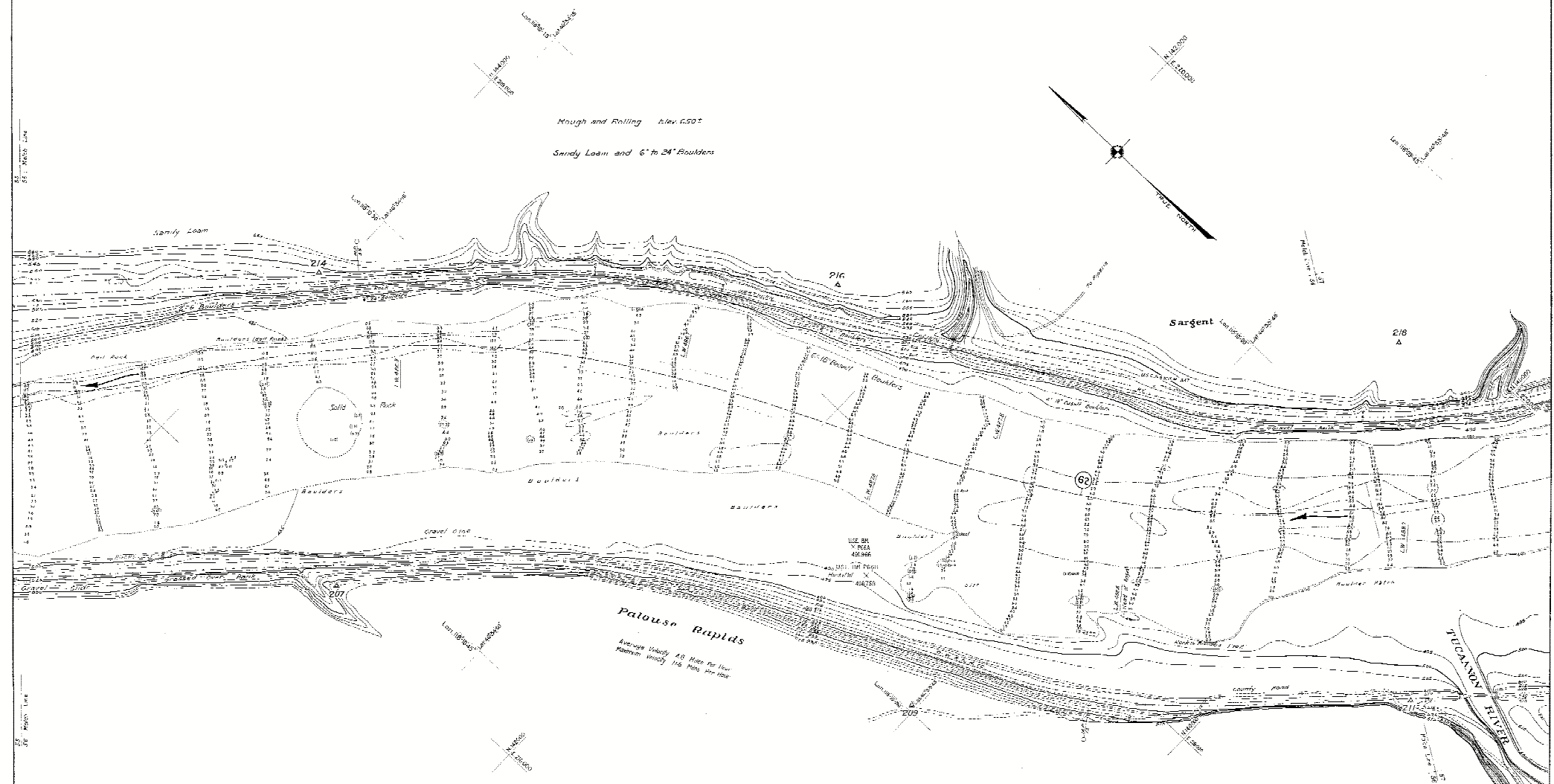
IN 54 SHEETS SCALE 1:2,000 SHEET NO. 55

U. S. ENGINEER OFFICE, PORTLAND, OREGON. 1934.

Submitted: *Allen W. Darr* Associate Engineer
 Approved: *W. H. Williams* Major, Corps of Engineers

Drawn by G. S. R. G. Y. Transmitted with report dated June 10, 1935

SN-1-12/55
 H-9-2/55



Notes

Contours are in feet and tenths and minor height at adopted low water plane 100 on U. S. Weather Bureau gage at Rimbula, El. 812.05 M. S. L. 3

Profile in parentheses show 11.72' above low water. Elevation are reduced to mean sea level 1000.00 datum 1000

Contour interval 6 feet

6' LAST SPLIT SHOWS THIS

6' MORE THAN QUARTER SHOWN THIS

CENTER LINE OF PROPOSED CHANNEL SHOWN THIS

DISTANCE IN MILES FROM MOUTH OF RIVER MEASURED ON CENTER LINE OF PROPOSED CHANNEL SHOWN THIS: 62

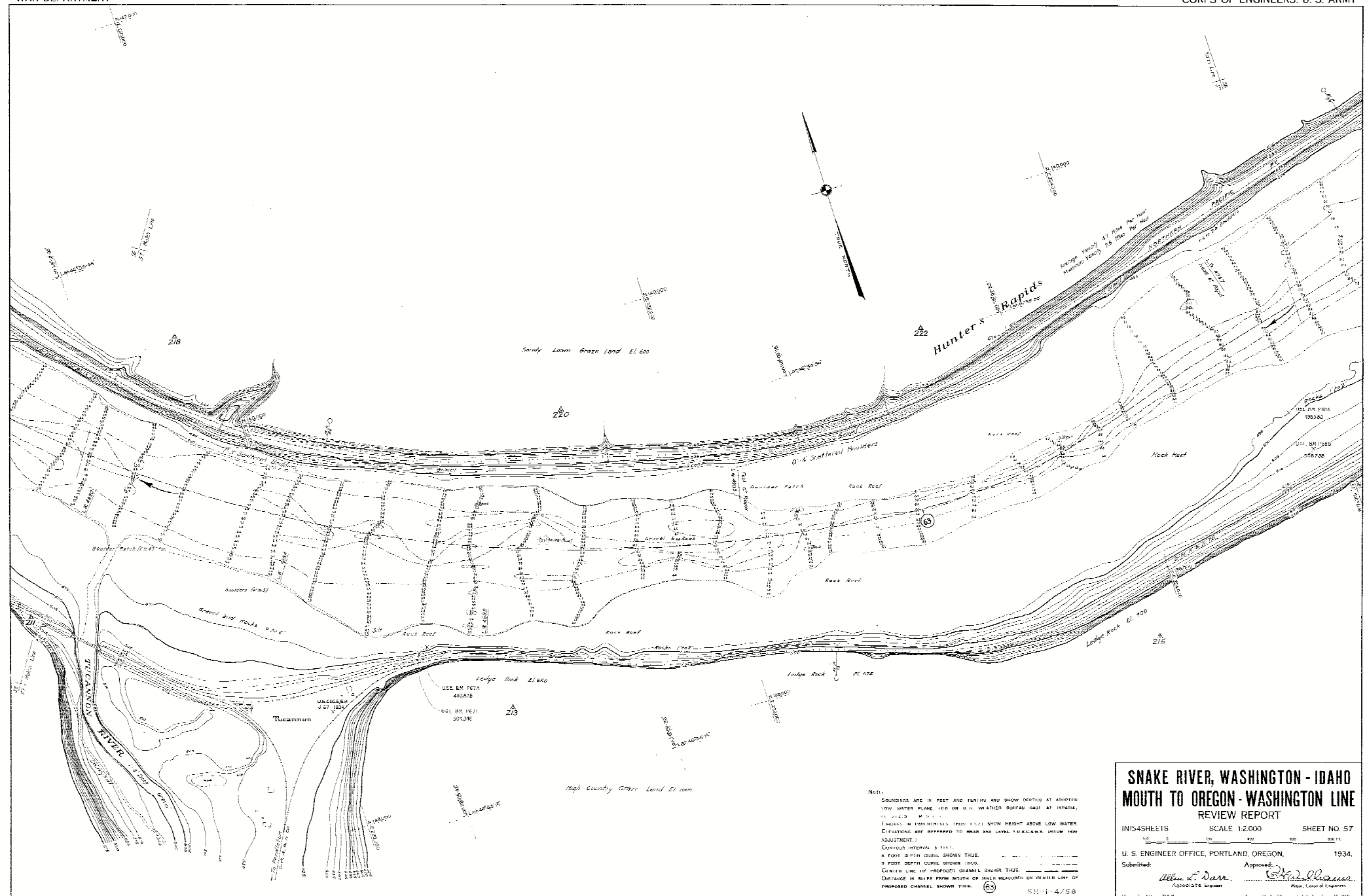
SNAKE RIVER, WASHINGTON - IDAHO MOUTH TO OREGON - WASHINGTON LINE
REVIEW REPORT

1:154 SHEETS SCALE 1:2000 SHEET NO 56

U. S. ENGINEER OFFICE, PORTLAND, OREGON, 1934.

Submitted: *Allen W. Dier* Associate Engineer
 Approved: *Edwin J. ...* Major, Corps of Engineers

Drawn by H. E. G. Transmitted with report dated June 10, 1935



NOTES:
 DIMENSIONS ARE IN FEET AND FATHOMS AND SHOW CHANGES AT APPROXIMATE LOW WATER PLANE, 1.00 ON U.S. WEATHER BUREAU GAUGE AT TUPACAN, 11 214.0 M.D. 11.
 ELEVATIONS IN BATHYMETRICAL TABLES SHOW HEIGHT ABOVE LOW WATER. ELEVATIONS ARE REFERRED TO MEAN SEA LEVEL OF OREGON'S UNIFORM 1920 ADJUSTMENT.
 CONTOUR INTERVAL 5 FEET.
 5 FOOT DEPTH CHANNEL SHOWN THUS: ————
 5 FOOT DEPTH SLOPE SHOWN THUS: ————
 CENTER LINE OF PROPOSED CHANNEL SHOWN THUS: ————
 DISTANCE IN FEET FROM MOUTH OF RIVER MEASURED ON CENTER LINE OF PROPOSED CHANNEL SHOWN THUS: (5)

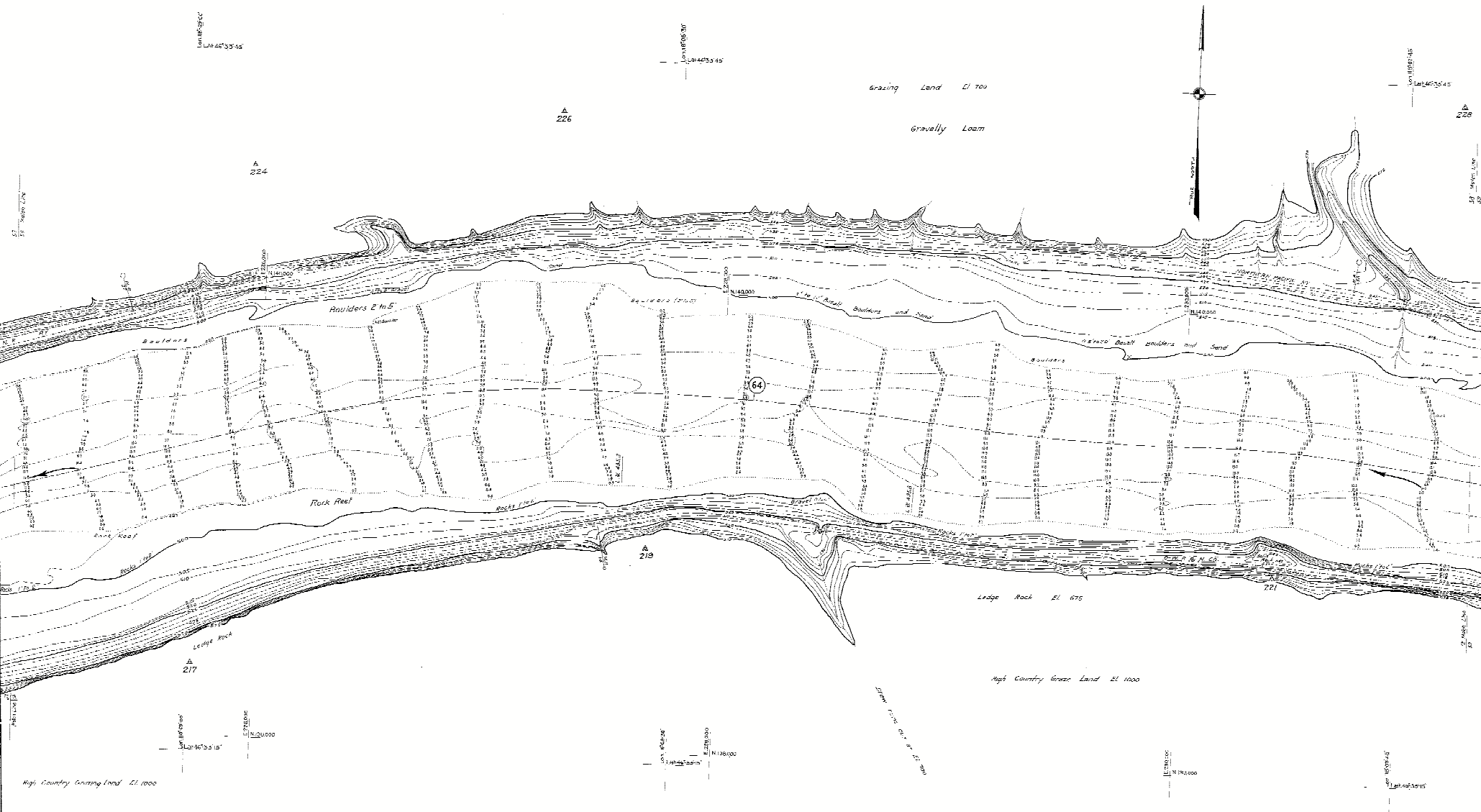
SNAKE RIVER, WASHINGTON - IDAHO MOUTH TO OREGON - WASHINGTON LINE REVIEW REPORT

INIS45HE15 SCALE 1:2,000 SHEET NO. 57

U. S. ENGINEER OFFICE, PORTLAND, OREGON, 1934.

Submitted: *Allen L. Darr* Associate Engineer
 Approved: *[Signature]* Major, Corps of Engineers

Shown by M.L. R&E Transmitted with report dated June 10, 1934



NOTE:
 CONTOURS ARE IN FEET AND TENTHS AND SHOW DEPTHS AT APPROXIMATE LOW WATER PLACES FOR ON U.S. WEATHER BUREAU GAGE AT HIRAPAN, EL. 516.00 M.S.L.
 FIGURES IN PARENTHESIS SHOW ELEVATION ABOUT LOW WATER. DEVIATIONS ARE INDICATED BY MEAN SEA LEVEL. (E.C. 6.6.6. DATUM 1000 ADJUSTMENT.)
 CONTOUR INTERVAL 5 FEET.
 5 FOOT DEPTH CURVE SHOWN THUS: ————
 10 FOOT DEPTH CURVE SHOWN THUS: - - - - -
 CHANNEL CURVE OF IMPROVED CHANNEL SHOWN THUS: ————
 DISTANCE IN FEET FROM MOUTH OF RIVER MEASURED ON CENTER LINE OF IMPROVED CHANNEL SHOWN THUS: (64)

SNAKE RIVER, WASHINGTON - IDAHO MOUTH TO OREGON - WASHINGTON LINE
 REVIEW REPORT
 11545 SHEETS SCALE 1:20,000 SHEET NO. 58
 U. S. ENGINEER OFFICE, PORTLAND, OREGON. 1934.
 Submitted: *Alvan R. Barr* Approved: *Edw. J. ...*
Particulars Engineer Major Corps of Engineers
 Drawn by H.C. R.G.Y. Transmitted with report dated June 10, 1935.



Note:
 Contours are 10 feet and tenths and show depths at depicted
 low water plane 100 on U.S. weather gauge at Refugia,
 EL 813.05 M.S.L. (Lodge points at 700)
 Figures in parentheses show 11.7' show height above low water.
 Elevations are referred to mean sea level 1929 and are
 accurate to ± 0.5 feet.
 Contour interval 5 feet.
 5 foot depth contours shown thus: _____
 2 foot depth contours shown thus: _____
 Dotted line of proposed channel shown thus: _____
 Distance in feet from width of river measured on center line of
 channel shown thus: (65)

Texas Rapids

Average Velocity 54 Miles Per Hour
 Maximum Velocity 114 Miles Per Hour

SNAKE RIVER, WASHINGTON - IDAHO
MOUTH TO OREGON - WASHINGTON LINE
 REVIEW REPORT
 INIS4 SHEETS SCALE 1:2,000 SHEET NO. 39
 U. S. ENGINEER OFFICE, PORTLAND, OREGON. 1934.
 Submitted: _____ Approved: _____
 Allen C. Barr, Associate Engineer Major, Corps of Engineers
 Drawn by H. L. R. G. Y. Transmitted with report dated June 10, 1935

U. S. N-11-4780
 H-9-2758